

MERCER COUNTY

HEAD START/ EARLY HEAD START/ PA PRE-K COUNTS PARENT HANDBOOK

2021-2022

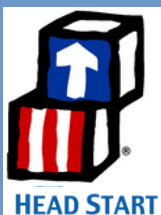




Table of Contents

WELCOME AND PROGRAM INFORMATION

Introduction/Welcome	3
Mission Statement	4
Staff Directory	5
Family Advocate Staff Directory	5
EHS Staff Directory	5
Classroom Directory	6
HS/EHS Parent Responsibilities	7
HS/EHS Staff Responsibilities	8
Confidentiality Statement	9
Family Educational Rights and Privacy Act	9
Child Abuse	9
Complaints and Concerns	10

PARENT ENGAGEMENT INFORMATION

Opportunities for Parent Engagement	11
Policy Council	12
Center Committee Meetings	12
Attendance	13
Family Support Staff	13
Custody	13
Home Visiting Safety	14
Smoke & Tobacco-Free Environment	14
Volunteer Clearances	15

EDUCATION INFORMATION

Curriculum	17
Assessment	17
Daily Schedule	18
General Information	18
Transition	19
Cancellations / Delays	20
Communication	20
Releasing a Child	21
Child Not Picked Up	21
Child Passenger Safety	22
Pedestrian Safety	22

MENTAL HEALTH AND DISABILITIES

Screenings	23
Behavior Management Policy	24
Mental Health Referrals & Resources	24
Positive Behavior Interventions and Supports	24

HEALTH & NUTRITION INFORMATION

Physical & Dental Exams	26
Dental Hygiene	27
Short Term Illness & Exclusion	27
Health Emergencies	27
Short Term Illness Chart	28
Medication	29
Meals	29

COMMUNITY RESOURCES

Community Resource Directory	30
Agency Index	31
Resource Index	35
Resource Directory	42
Dentist & Dental Clinics/Centers	60
Obstetricians	62
Physicians & Pediatricians	63
Hospitals	65



Welcome



Welcome to the Mercer County Head Start/Early Head Start & PA Pre-K Counts Programs!

Dear Parents/Guardians:

We welcome you to our programs, whether your child will be attending Head Start, Early Head Start or the Pre-K Counts program, we recognize that you will always be your child's first teacher and we thank you for entrusting your child into our hands for the upcoming school year.

We recognize that every child is unique with different abilities and needs. The educational program objectively assesses each child's abilities and needs and works with the parents to advance the learning skills of the children.

We promise:

- To love and respect your child.
- To provide a safe and healthy learning environment for your child.
- To provide an inviting, educational environment full of wonderment.
- To respect and treat our parents with dignity and honor.
- To maintain open and honest communication with parents.
- To maintain confidentiality at all times.

We ask you to share your talents by volunteering in the classroom, attending socializations, completing home projects, participating in family events, and reading to your child at home.

Thank you for the opportunity to serve you.



Important Information

MISSION STATEMENT

“MERCER COUNTY HEAD START/EARLY HEAD
START/PA PRE K COUNTS CONNECTS
CHILDREN, FAMILIES, AND COMMUNITIES BY
PARTNERING QUALITY EDUCATION WITH CARING
SUPPORT SERVICES TODAY FOR A BETTER
TOMORROW”



Important Information

Center/Site: _____

Family Advocate / Home Visitor: _____

Phone Number (FA/HV): _____

Teacher: _____

Classroom Assistant(s): _____

Center/Site's Phone Number: _____

Hours/Days of Operation: _____

MCHS/EHS/PA PRE-K COUNTS STAFF DIRECTORY

724-346-4482

EXECUTIVE DIRECTOR: Wendy King.....ext. 1335

Tammy Ross, Administrative Assistant.....ext. 1320

Amanda Beich, Program Secretary.....ext. 1387

Program Operations Director: Jennifer Zilla...ext. 1381

SERVICE AREA MANAGERS

Adrian Searle, Family & Community Engagement.....ext. 1351

Genna Zelinsky, Education/Transition.....ext. 1345

Jessica Rossi, Health/Safety.....ext. 1342

Joe Berringer, Human Resources.....ext. 1341

Madelyn Shuttleworth, Disabilities/Mental Health.....ext. 1330

Mary Sternthal, Fiscal.....ext. 1326

Michelle Comstock, Early Head Start.....ext. 1331

Ron Viglio, Network Administrator.....ext. 1322

SUPERVISORS

Angie Barlow, Accounting.....ext. 1345

Ashely West, Health Assistant.....ext. 1356

Betty Kaldy, Education.....ext. 1344

Billie Jo Rhoades, Network Admin. Assistant.....ext. 1357

Carrie Brown, PA Pre-K Counts.....ext. 1323

Chelsea Wilson, Education.....ext. 1338

Hannah Tomko, Family & Community Engagement.....ext. 1350

Kayla Donato, Nutrition.....ext. 1321

Katelyn McCarthy, Education.....ext. 1365

Margaret Riggans, Education.....ext. 1394

Melissa Strausser, Health Assistant.....ext. 1358

Nicolette DeVincentis, Education.....ext. 1393

Rebecka Schell, Disabilities/Mental Health/PBIS Coach.....ext. 1353

Stephanie Morimando, Education Coach.....ext. 1339

HEAD START FAMILY ADVOCATE STAFF

Amanda Marsteller.....ext. 1332

Dannielle Marks.....ext. 1349

Deanna Mikoloff.....ext. 1360

Jennifer Footman.....ext. 1352

Lindsey Jones.....ext. 1359

Magnolia Green.....ext. 1333

Stephanie Carson.....ext. 1364

Fax.....724-342-3771

EARLY HEAD START HOME VISITOR STAFF

Courtney Schmidt.....ext. 1336

Doddy Robinson.....ext. 1363

Doran Ellebie.....ext. 1328

Kaitlin Brooks.....ext. 1334

Marlene Roch.....ext. 1361

Mary Svirbly.....ext. 1354

Tashinia Lowe.....ext. 1362

Fax.....724-342-3771



MCHS/EHS/PA PRE-K COUNTS CLASSROOM DIRECTORY

Head Start Classrooms

Case Ave.....	724-983-4015 x.5104
Commodore Perry.....	724-253-2054
Farrell 1 (Hetra).....	724-346-4482 x.1343
Farrell 2 (Hetra).....	724-346-4482 x.1325
Farrell 3 (Hetra).....	724-346-4482 x. 1384
Greenville AM/PM.....	724-699-4302
Greenville Head Start.....	TBD
Grove City.....	724-458-4944
Hermitage 1.....	724-677-1596
Hermitage 2.....	724-301-1597
Jamestown.....	724-932-5657
Lakeview.....	724-301-2448
Mercer 1.....	724-662-5102 x.3718
Mercer 2.....	724-662-5102 x.3710
Musser 1.....	724-977-6074
Musser 2.....	724-372-2669
Reynolds 1.....	724-646-3041
Reynolds 2.....	724-646-0088
Sharpsville (Elementary).....	724-962-7168 x.9 - 3112
Seventh Street (Sharpsville).....	724-962-2096
West Hill 1.....	724-301-4823
West Hill 2.....	724-301-4635
West Middlesex.....	724-528-1502

PA Pre-K Counts Classrooms

Artman.....	724-981-8750 x.5202
Case Ave.....	724-983-4015 x.5105
Grove City.....	724-877-0259
Mercer.....	724-622-5102 x. 3713
Thiel College.....	724-589-2405
West Middlesex.....	TBD



Parent's Program Responsibilities

By enrolling your child in the Head Start/Early Head Start/PA Pre-K Counts program, you have shown that you are a concerned parent who desires the best possible start in life for your child. This commitment carries the following responsibilities:

AS THE CHILD'S PARENT/ GUARDIAN, I WILL:

- Spend quality time daily with my child and together do home projects.
- Set a consistent morning and bedtime routine.
- Attend and participate in Center Committee Meetings/Family Events.
- Set realistic individualized goals for my child with the classroom teacher/home visitor.
- Call the classroom before the class start time to let staff know if my child will be late or absent so the meal count will be accurate.
- Maintain regular attendance
- Provide a written excuse when my child is absent from school. A doctor's excuse is required if a child had a contagious illness or was absent for surgery.
- Provide current physical, dental exams, and immunization records for each child.
- Drop off and pick up my child promptly at the scheduled classroom times and provide a photo ID for identification.
- Notify the classroom Family Advocate/Home Visitor of any updates to the Child Release Authorization form.
- Abide by MCHS/EHS policies and procedures.

HEAD START REQUIRES ALL CLASSROOM PARENTS/ GUARDIANS TO:

- Develop a Family Advancement Plan, assisted by staff (within 45-60 days of enrollment) and update as needed.
- Attend monthly Center Committee Meetings and keep current on Head Start activities and opportunities.
- Keep scheduled home visits with teachers and family advocates.
- Schedule and participate in Parent /Teacher Conferences.
- Obtain clearances for volunteering in classrooms, field trips, and special school events.

EARLY HEAD START REQUIRES ALL HOME-BASED PARENTS/ GUARDIANS AGREE TO:

- Develop a Family Advancement Plan, assisted by staff (within 45-60 days of enrollment) and updated as needed.
- Attend Center Committee Meetings and keep current on Early Head Start activities and opportunities.
- Plan 90-minute weekly home visits with the home visitor.
- Follow through with the home activities planned for the upcoming week.
- Schedule the date and time of the next home visit with the home visitor before the visit is completed. If unable to keep the appointment call and reschedule with your home visitor.
- Attend monthly scheduled socializations as they are very important for you and your child to receive the most benefits from the program.

Staff Responsibilities

ALL HEAD START/EARLY HEAD START/ PA PRE-K COUNTS STAFF WILL:

- Abide by the Mercer County Head Start/Early Head Start/PA Pre-K Counts confidentiality policy.
- Report any suspected child abuse suspected, following Mercer County Head Start/Early Head Start/PA Pre-K Counts policies and procedures.
- Be knowledgeable of all community resources and refer families as necessary.
- Keep abreast of developments in the field of early childhood education and family engagement strategies and resources.

HEAD START/ PA PRE-K COUNTS CLASSROOM STAFF WILL:

- Notify parents of field trips taken during the school year.
- Notify parents whenever their child is injured in the classroom.
- Complete a minimum of two (2) home visits each year. (Teacher) (Head Start Only)
- Complete a minimum of two (2) social service home visits each year, more frequently based on needs of the families. (Family Advocate) (Head Start Only)
- Complete a minimum of two (2) Parent-Teacher Conferences per year.
- Create a high-quality learning environment that meets yet challenges the developmental, cognitive, physical, and social-emotional skills of the children in their care.
- Inform parents of classroom happenings through a monthly newsletter.

EARLY HEAD START HOME- BASED PROGRAM STAFF WILL:

- Plan the date and time of the next (weekly) home visit with parent.
- Plan weekly home visits lasting 1 ½ hours with parent and child.
- Plan socializations.
- Plan continuing activities for parents to engage their child on a skill or task.



Program Information

MERCER COUNTY HEAD START/EARLY HEAD START/PA PRE-K COUNTS RECOGNIZES THE PRINCIPLE OF FAIR AND RESPECTFUL TREATMENT AMONG STAFF AND FAMILIES. EVERYONE HAS A RESPONSIBILITY TO SET A POSITIVE EXAMPLE AND BEHAVE IN A MANNER THAT WILL NOT OFFEND, EMBARRASS, HUMILIATE, HARASS, OR BULLY OTHERS, WHETHER BY DELIBERATE OR UNINTENTIONAL ACTIONS. POSITIVE COMMUNICATION BETWEEN PEOPLE, COURTEOUS CONDUCT, MUTUAL RESPECT AND FAIRNESS, AND COLLABORATIVE WORKING RELATIONSHIPS WILL ENSURE A VALUABLE EXPERIENCE FOR ALL INVOLVED.

CONFIDENTIALITY

The Mercer County Head Start / Early Head Start / PA Pre-K Counts Program believes in the integrity of all our clients and will do everything possible to ensure that all information obtained on a child or the families enrolled in the programs will be kept in the strictest confidence. You will be asked to sign a confidentiality statement at your child's eligibility appointment.

FAMILY EDUCATION RIGHTS AND PRIVACY ACT (FERPA)

The Family Educational Rights and Privacy Act (FERPA) is a federal law that protect the privacy of the student's educational record. The law applies to all schools that receive funds under an applicable program in the U.S. Department of Education.

FERPA gives parents certain rights with respect to their children's education records. These rights transfer to the student when he/she reaches the age of 18 or attends a school beyond the high school level. Students to whom the rights have been transferred are "eligible students."

Schools may disclose, without consent, "directory" information such as a student telephone number, date and place of birth, honors and awards, and dates of attendance. However, schools must tell parents and eligible students about directory information and allow parents and eligible students a reasonable amount of time to request that the school not disclose directory information about them. Schools must notify parents and eligible students annually of their rights under FERPA. The actual means of notification (special letters, inclusion in a PTA bulletin, student handbook, or newspaper article) is left to the discretion of each school.

CHILD ABUSE

The Mercer County Head Start/Early Head Start/PA Pre-K Counts staff are mandated reporters according to the Child Protective Service Law. When any staff member has reasonable cause to suspect a child is being abused or neglected, Childline will be called. Mercer County Head Start/Early Head Start/PA Pre-K Counts encourages parents who suspect child abuse to contact Childline at 1-800-932-0313.

Program Information

COMPLAINTS/CONCERNS

We would like to ensure that any concerns are addressed in a timely and fair manner. In the very best of situations, not everyone can always agree on every given issue. When a problem arises, we ask that you first discuss it with that individual to come to an amicable and agreeable resolution. In the event that you cannot resolve your conflict by first discussing the concern with the individual directly involved please contact the following people:

COMPLAINT WITH:



Parent Engagement Information

Partnership with parents has always been the cornerstone of Head Start/Early Head Start/PA Pre-K Counts. It is only through the active participation of parents and guardians, like you that the Head Start/Early Head Start/PA Pre-K Counts Program and your child will continue to grow.

Opportunities for Parent Engagement

Head Start/Early Head Start/PA Pre-K Counts staff and parents frequently refer to themselves as the Head Start/Early Head Start/PA Pre-K Counts Family or Community. As with all families and communities, many day-to-day activities require our individual attention. So, you might ask, “How Can I Volunteer?”

The answer is there are many ways you can volunteer your services. Some examples include:

- Volunteer to spend the day with your child in the classroom (see pg. 15, Volunteer Clearances)
- Attending Center Committee Meetings/Socializations
- Becoming a member of Policy Council (Head Start/Early Head Start Only) or other committees
- Being a classroom or field trip volunteer
- Participating in home visits
- Attending workshops, trainings, and informal “get-togethers”
- Preparing for education / employment opportunities
- Participating in the annual Program Self-Assessment
- Represent Head Start / Early Head Start / PA Pre-K Counts at a community event
- Become a classroom substitute (see page 15 for information)

Parent Training

The Head Start/Early Head Start programs offer a series of trainings and learning opportunities for parents/guardians. Workshops and trainings are offered throughout the year at various locations and are based on the interests and needs of parents.



Parent Engagement Information

Policy Council

(Head Start/Early Head Start Only)

The Policy Council is composed of program parents, community agencies, and past parents. At least 51% of the Policy Council must be a parent of child(ren) currently enrolled in the Head Start/Early Head Start Program. By becoming a member of this Council, you will be a part of the decision-making process for the entire program. Your delegate will attend the meetings and keep you informed of all developments. Additionally, this person is the voice of your center or program (EHS). They are able to forward your ideas or concerns to the Policy Council. The Policy Council meets on the first Tuesday of each month at 10:00 am. Meetings will be held at the John Hetra Child Development Center, Farrell, PA. Mileage for attending Policy to and from the meetings will be paid to the parent representatives. Child Care available upon request.

Policy Council Representative

Are the voice of their Head Start/Early Head Start Programs
Assist with decision making for the Head Start/Early Head Start Program

Policy Council Alternates at Large

Are welcome and encouraged to attend ALL meetings and are voting members when needed

Parent Center Committee Meetings

(Head Start/Early Head Start Only)

Parent Center Committee meetings are held on a regular basis throughout the year. Attending these meetings provide all parents with the opportunity to work with staff, develop activities for both children and parents, learn more about the Head Start/Early Head Start Program and develop strong leadership skills. The Parent Center Committees are most effective when all parents attend the meetings and become involved.

The Officers for the Center Committees are the Chairperson and Vice-Chairperson. A brief outline of their responsibilities is listed below:

Chairperson

Maintain order throughout the meeting
Call the meeting to order
Introduce speaker
Make every attempt to attend ALL meetings

Vice-Chairperson

Move into Chair position should the Chairperson resign or is absent
Make every attempt to attend ALL meetings
Assist Chair as needed

The Family Advocates and/or Early Head Start Manager assist with arranging guest speakers and activities. If you are interested in a specific topic or speaker let your Family Advocate or Early Head Start Manager know.



Parent Engagement Information

Attendance

Head Start /PA Pre-K Counts Center-Based (Classrooms)

It is very important for your child to attend school on a regular basis for several reasons:

- 1.) Your child will learn that parents feel school is important.
- 2.) Your child will participate in activities and improve social skills.
- 3.) Your child will improve school readiness skills.

Parents/guardians are **REQUIRED** to call or send an excuse for each day your child does not attend class to explain the reason.

If a child has 2 or more unexplained absences and/or the child has patterns of absence that put them at risk of missing ten percent of program days per year, the Family Advocate will complete a home visit or make direct contact with the child's parent/guardian. If a plan is needed, the parent/guardian will meet with the Family Advocate and develop strategies to support your family, so your child can resume regular attendance. If a family fails to re-establish regular attendance according to the plan, they will receive a letter from the program stating that their child's slot is vacant. Upon family's request, the child may be placed on the waiting list.

If a child is unexpectedly absent and a parent has not contacted the program within one hour of the program start time, the Family Advocate will contact the family to ensure the child's well-being.

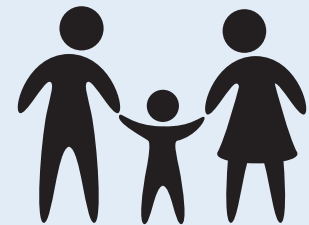
Early Head Start Home Based

Participation on a weekly basis is important for your child to receive the most benefits from the program. Families that frequently miss home visits will be asked to create a plan to help improve their participation. If a family fails to re-establish regular attendance according to the plan, they will receive a letter from the program stating that their child's slot is vacant. Upon family's request, the child may be placed on the waiting list.

Family Support Staff

Family & Community Engagement staff will be available to:

- Discuss your participation in program activities.
- Help you identify strengths and establish goals by developing a Family Advancement Plan (Head Start/Early Head Start Only).
- Offer information and referrals to community agencies based on the family needs.
- Provide literacy information and materials for the child and family.
- Serve as a support person for your family.
- Make any changes to the Child Release Authorization Form.



The Head Start Family Advocate will meet with you a minimum of two times during the year.

The Early Head Start Home Visitor will visit you weekly, which is a requirement in the Early Head Start home-based option.

If you are unable to keep a scheduled home visit, please contact your family advocate or home visitor as soon as possible to arrange another time.



Custody

Custody paperwork is your responsibility. Custody agreements and court orders must be on file at the center in order for Head Start/Early Head Start/PA Pre-K Counts to abide by the agreement. Please give a copy of all current custody orders to your Teacher, Family Advocate, or Home Visitor.

Parent Engagement Information

Home Visiting Safety

(Head Start/Early Head Start Only)

Staff will always schedule home visits with you in advance. If an emergency or unforeseen situation would occur, please notify the staff immediately if you are unable to keep your home visit. Please maintain an accessible pathway to the home, such as clearing the walkway of snow. Please secure pets so they are not running loose in the yard or house. If a home visit is scheduled in the late afternoon or evening, please leave a porch light on for staff.

Smoke & Tobacco-Free Environment Policy

To promote a healthy environment for families, and in compliance with federal regulation, Mercer County Head Start/Early Head Start provide smoke and tobacco-free environments, designed to eliminate smoke and tobacco exposure to children, parents, and staff in our program.

- o Smoking or use of any tobacco product, by anyone is NOT PERMITTED on program property.
- o We ask that parents set an example by NOT smoking or using any tobacco product within sight of the children, such as pick-up and drop-off locations, and family events.
- o We also ask that cigarettes and other tobacco-related items not be visible during home visits.

We appreciate your cooperation in supporting this initiative and joining us in providing the healthiest environment possible for everyone involved in our program.



Parent Engagement Information

Volunteer Clearances – Background Checks ~ IT'S THE LAW

Under the Child Protective Services Law, classroom volunteers are required to obtain background checks before volunteering in the classrooms, this includes parents, interns, student teachers, etc. There are two clearances that all volunteers must obtain 1. Child Abuse History Clearance issued by the Department of Human Services and 2. Criminal History Record Check issued by the Pennsylvania State Police Department. The fee for these clearances has been waived by the Governor and is FREE for volunteers.

If you have not lived in the State of Pennsylvania consistently for the past 10 years you will also have to acquire an FBI Criminal Background Check, which costs \$27.00. You must register online or by phone at <https://uenroll.identogo.com> or 1-888-439-2486 before you go to get fingerprinted at Midwestern Intermediate Unit 4 453 Maple Street, Grove City, PA.

You can request copies of the Clearances Forms from your teacher or contact our offices at 724-346-4482 ext. 1341 and we can mail you copies. For more information about clearances required under the Child Protective Services Law please visit www.keepkidssafe.pa.gov. If you are seeking clearances go directly to www.compass.state.pa.us/cwis to create an individual account and apply for your child abuse clearances electronically. For Criminal History check go online to <https://epatch.state.pa.us>.

All clearances are to be submitted to:

Joe Berringer, Human Resource Manager
Mercer County Head Start Administrative Office
1901 Memorial Drive
Farrell, PA 16121

Once both of your clearances are submitted to the Human Resource Manager, it will be reviewed, and a determination will be made regarding your ability to volunteer. You and the teacher will be notified in writing regarding your ability to volunteer and a date you can start. If there is an issue with your clearance determination, you will be contacted directly by the Human Resource Manager.

Please allow 30 days after submission of both of your clearances to Human Resources for a determination to be made.

No parent, relative, guardian, student teacher or other person will be permitted in the classroom without clearance determination and approval from the Human Resource Manager.

Please note, the Head Start and Pre-K Counts programs are guests of the school districts in which your child is attending, each school district has a right to request a copy of your clearances. We are permitted to share your determination to volunteer with the school district, but we will not share the actual clearance documents, nor give a hard copy of the clearances without your signed written permission.



Did you know?

**PARENTS CAN BECOME A PAID SUBSTITUTE. IF YOU ARE INTERESTED, CONTACT:
HUMAN RESOURCES MANAGER AT
724-346-4482 EXT. 1341**

Education Information



Education Information

Curriculum

Head Start /PA Pre-K Counts Center-Based (Classrooms)

Mercer County Head Start/PA Pre-K Counts classrooms utilize the *Creative Curriculum for Preschool* a nationally recognized curriculum for 3-5-year-old children.

The curriculum provides opportunities for the children to experience a variety of developmentally appropriate discoveries plus addresses the individual needs of each enrolled child. Your child will have the opportunity to participate in whole group, small group, and individual learning activities daily. Additionally, he/she will experience teacher-led and child-initiated learning opportunities. Parents are invited to volunteer in their child's classroom to learn about and understand our curricular. As your child's parent/guardian, you will participate in setting and updating individual goals for your child throughout the year. Clearances are needed to be able to volunteer in your child's classroom. Please call your Family Advocate or the Human Resource Office for assistance with obtaining these clearances.

Early Head Start Home Based

Early Head Start home-based curriculum is *Parents as Teachers (PAT)*. It is based on the philosophy that a parent is their child's first and best teacher. It provides information to the parent/guardian on child development, including learning materials that can be made at home for playtime to encourage development. PAT also has topics in the areas of health, safety, and nutrition.

Partners for a Healthy Baby is a comprehensive curriculum that is used with pregnant woman in our Early Head Start program. The home visitor meets with the pregnant woman every other week to support the family with prenatal health, baby's development, self-esteem and self-sufficiency, pregnancy concerns, preparation for baby's arrival, etc.

Assessment

The assessment tool used for all programs is Teaching Strategies GOLD. This aligns with the Head Start Child Outcome Framework and PA Early Learning Standards.

Head Start/PA Pre-K Counts – Ongoing observation and assessments are completed on each child throughout the year. Assessment results are shared with parents at two parent/teacher conferences per year and at other times upon parent request. Child assessment information will only be shared with the parents or legal guardians of each child.

Early Head Start - Ongoing observation and assessments, done in conjunction with the family, are completed on each child throughout the year. Assessment results are shared with families during home visits and strategies are discussed to support children's developmental progress. Child Assessment information will only be shared with the parents or legal guardians of each child.



Education Information

General Information

CLOTHING

Please choose comfortable clothing which allows your child to play and create without being afraid of “getting dirty.” Going outside is part of our daily curriculum. Please dress your child appropriately for the weather, including hats, gloves, and boots, when necessary. Rubber-soled shoes, preferably sneakers, are recommended. A backpack or book bag is beneficial to send notes, messages, and your child’s work home to you. Please send in an extra bag of clothing in case your child needs to be changed during the day.

FIELD TRIPS

Mercer County Head Start/PA Pre-K Counts classrooms schedule field trips periodically throughout the year. Program staff depend on parents to assist in planning field trips and accompanying the children and staff when possible. Clearances are needed to be able to go on field trips with your child.

DAILY SCHEDULE

The daily schedule provides a set routine and flow of the day’s learning activities and events. The daily schedule reflects key learning components, activities and groupings that align with state and federal standards. Please check the classroom schedule and ask your child what he/she is learning throughout the day.

You will find:

- Child initiated experiences
- Quiet and active times
- Independent and guided activities
- Large and small groups
- Individual activities
- Reading to children
- Breakfast and lunch
- Gross motor activities and outdoor playtime



Education Information

Transition

Transition is the process of moving your child successfully from one program to another.

I. Early Head Start ~

At two years, six months of age, each Early Head Start child will begin the transition process to move them from Early Head Start to the next appropriate placement. Staff will work closely with families to ensure a smooth transition working on an individualized plan which includes parent input, available options, and resources.

II. Head Start/PA Pre-K Counts ~

Children begin their transition to kindergarten on the very first day of enrollment. Visits to kindergarten classrooms, classroom activities, kindergarten registration, parent meetings, and school district meetings help make this a smooth transition.

III. Kindergarten School District Meetings ~

Meetings are scheduled in the spring with each school district to help make this a smooth transition for not only the children but the parents as well.

For children who will enter kindergarten the following school year:

Parents will be asked to sign transition permission forms. This permission will allow classroom staff to gather transition information to share with the receiving school district. The information that parents have given permission to share will be collected and reviewed with the school district in the spring at the annual transition meeting.

Head Start/PA Pre-K Counts teachers create an environment that guides and supports the children to learn and adjust to various transitions that occur during the day. These transitions prepare the children to further gain skills for kindergarten readiness. The teachers work with kindergarten teachers to plan activities with kindergarten friends.



Education Information



Cancellations / Delays

In case of inclement weather or unforeseen emergencies Head Start/Early Head Start/PA Pre-K Counts will follow your local school district. If your school district cancels school Head Start/Early Head Start/PA Pre-K Counts will be closed too. If there is a two-hour delay, Head Start/Early Head Start/PA Pre-K Counts is on a two-hour delay also. Please listen to the following radio and television stations:

Radio: Y-103 102.9 (Sharon/Youngstown), 95.1 (Grove City), WGRP 107.1 (Greenville)

Television: Channels 21 NBC, 27 CBS or 33 ABC (Youngstown)

Communication

The program will utilize the One Call Now message notification service for families who have provided us with contact information. This message system will allow us to inform you of upcoming events and important program information. You must keep us informed of any changes that occur related to up-to-date contact/telephone numbers in order to receive these messages.

Education Information

Transportation

Releasing a Child from Head Start/ PA Pre-K Counts Program

When your child is picked up at the classroom it **MUST** be by a person that is listed on the Child Release Authorization/Emergency Contact Form. He/She must be 18 years of age or older and have photo identification. Staff will **NOT** release a child to any adult whose name is not on the Child Release Authorization/Emergency Contact Form.

All additions/deletions must be made in writing to the Child Release Authorization/Emergency Contact Form, by following these guidelines:

- Head Start parents/guardians should call their Family Advocate to make an appointment so a change can be made.
- PA Pre-K Counts parents/guardians should call the FCE Supervisor to make an appointment so a change can be made.

It is your responsibility to keep all phone numbers and addresses current for all persons on the Child Release Authorization/Emergency Contact Form. Changing a phone number or an address **CAN** be done over the phone with the Family Advocate. You **MAY NOT** call into the classroom to add and delete people.

Head Start/PA Pre-K Counts Children Not Picked Up On Time

It is important to be on time to pick up your child.

When children are not picked up by the designated time, the following procedure will be followed:

1. - We will attempt to reach you by telephone. If we are unable to reach you, we will notify the individual(s) you have listed on your Child Release Authorization/Emergency Contact Form to come and pick up your child.
2. - If we are unable to reach you, or an individual who is listed on the Child Release Authorization/Emergency Contact Form, within one (1) hour of dismissal the local authorities and Children and Youth Services will be called.

Education Information

Child Passenger and Pedestrian Safety is very important to us!



Child Passenger

When transporting your child to and from the classroom everyday they should be in the back seat of the vehicle and in a car seat appropriate for their age and size. **IT'S THE LAW!** Failure to do so could result in a report to Child Protective Services. If you need a car seat, the program can help you secure one for your child. Please let your teacher, family advocate or home visitor know immediately. Make sure your car seat is installed correctly and you register your car seat to receive alerts and recall notices.

Pedestrian Safety

An adult 18 years of age or older must escort the Head Start/PA Pre-K Counts child to and from the designated pick-up and drop-off area at every site. It is never safe for a child to be in or around a vehicle without adult supervision. Children may suffer injury when playing alone around parked vehicles. Never leave a child unattended in or around a vehicle.



Mental Health and Disabilities Information

Enrollment opportunities in the Head Start/Early Head Start/PA Pre-K Counts program are available for children with disabilities in need of related services. Related services include, but are not limited to: speech therapy, specialized instruction, occupational therapy, etc.

Mercer County Head Start/Early Head Start/PA Pre-K Counts currently has strong collaborations with county Early Intervention programs for the provision of evaluations and services. Parental permission must be obtained.

Screenings

Head Start / PA Pre-K Counts:

All Head Start and PA Pre-K Counts children will be screened within 45 days into the program. Our program utilizes the Ages and Stages Questionnaire-3 and Ages & Stages SE-2. The screening tool Ages and Stages provides a brief synopsis of your child's developmental skills and behavior overview. The results will be shared with the parents/guardians during the screening process and give you the results of your child's performance with recommendations as needed.

Early Head Start:

All Early Head Start children will be screened in the following areas using the Ages and Stages-3 and Ages and Stages SE-2: developmental, communication, vision, behavior, and hearing within 45 days of enrollment into the program and at regular intervals. These age-appropriate screenings include activities related to gross motor, personal-social, communication, fine motor, cognitive skills, and behavior. The results will be discussed with parents/caregivers along with recommendations and referral information if needed during the screening process.

Resources for follow-up of any identified concerns will be discussed with the parents/caregivers, as necessary. With parents/caregiver's permission, evaluations are coordinated with the appropriate outside agencies.



Mental Health and Disabilities Information

Behavior Management Policy

The Mercer County Head Start/PA Pre-K Counts Behavior Management Policy was created to ensure that all children enrolled in our program have the opportunity to learn in a safe, positive and nurturing classroom environment. This policy will be reviewed and signed at parent orientation, or with the Family Advocate at the time of enrollment, prior to the start of school. The policy is very specific, and we ask that you read it carefully.

Mental Health Referrals & Resources

Mercer County Head Start/Early Head Start/PA Pre-K Counts currently has a strong relationship with a county mental health agency. If a family/child is in need of services or you would like to arrange a consultation with our Mental Health Consultant you can contact your Classroom Teacher, Home Visitor, Family Advocate, or the Disabilities/Mental Health Manager.

Positive Behavior Interventions and Supports (PBIS)

Mercer County Head Start/Early Head Start/PA Pre-K Counts utilizes Positive Behavioral Interventions and Supports (PBIS). PBIS is an evidence based, multi-tiered system that incorporates the implementation of social, emotional, and behavioral supports within the classroom and home setting. This multi-tiered system is used to develop practices that supports student outcomes as well as an overall approach to create an environment that enables students to succeed.

In addition to PBIS, Mercer County Head Start/Early Head Start/PA Pre-K Counts participates in the Bucket Filler System. This system is used to “catch” a student displaying positive behaviors such as being kind, responsible, considerate, respectful, and caring. When a student is caught displaying one of these behaviors, following program wide expectations, and/or classroom rules, they can fill the classroom bucket. Once this bucket is filled, the classroom and/or student is then rewarded.



Health and Nutrition Information



Health and Nutrition Information

Physicals & Dental Exams

****A completed Physical and Dental Examination is required by Federal Regulations to be turned into the program within 90 days of the start of your child into the classroom.****

Your family's medical and dental home needs to be declared within 30 days after the start of your child in Head Start/Early Head Start. The program is further required to assist you in obtaining Health Insurance within 30 days of the start of your child in school. A copy of your child's physical or dental examinations can be turned into your Family Advocate, classroom teacher, or health office.

Your child's immunization record is encouraged to be turned in during enrollment but MUST be turned into the program within 60 days of the start of your child in the Early Head Start/Head Start/PA Pre-K Counts Programs.

If immunizations have not been or are not obtained because of either a medical or religious exemption, documentation must be provided by either the child's primary healthcare provider or parent/guardian. If a medical exemption is being claimed, the primary healthcare provider must supply the Program with documentation stating the reason why the child is temporary or permanently medically exempt from the immunization requirement. If the exemption is due to philosophical/religious beliefs the parent/guardian must provide the Program with a written statement as to the reason for objection to the immunization on religious grounds or on the basis of a strong moral or ethical conviction similar to a religious belief.

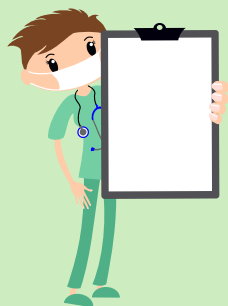
If a vaccine-preventable disease to which a child is susceptible occurs and potentially exposes unimmunized children who are susceptible to that disease, the health department will be notified and consulted to determine whether these children should be excluded. If your child is exempt from immunizations, he or she may be removed from school during an outbreak.

If you need any assistance, please contact the Health & Safety Manager at 724-346-4482 ext. 1342. Physician and Dental resources are listed for you in the Parent Community Resource book to assist you in your choice for your family.

Vision and Hearing screenings will be completed in the classroom within the first 45 days of school. A letter of your child's results will be sent home with your child within his/or her backpack.

Early Head Start ~ A copy of your child's most recent well-baby examination needs to be turned into your Home Visitor or the Health Office within 90 days of your child's enrollment in the Early Head Start Program and after each EPSDT visit thereafter. The Health office will assist you in any way of achieving copies from the physician.

If transportation or assistance in setting up an appointment is needed, please alert your Home Visitor or Family Advocate.



Health and Nutrition Information

Dental Hygiene

All Head Start/Early Head Start/Pre-K Counts programs support the importance of good dental care. Your children will learn how to brush their teeth and care for their toothbrush during school hours and during socialization for EHS. We encourage healthy eating along with Cavity Free/Healthy Smiles Dental Programs in our Health Program. Decaying or lost teeth can affect a child's overall health, nutrition, and speech. Follow-up dental care is crucial to the child's overall well-being. Good tooth brushing is practiced daily in our classrooms and socializations.

Short Term Illness & Exclusion

Ask yourself: Is my child too sick for school? This can be a tough call to make first thing in the morning. Here are some guidelines from your Head Start Health Office to make the right decision.

Does your child feel well enough to participate in class? A mild cough or runny nose does not mean a child can't focus in school. But children who are in pain, coughing continuously, or worried about going to the bathroom will not be able to focus.

Many times, these are short-term illnesses and once treatment is started by your doctor, we can bring your child safely back into school. With any contagious illness a call, doctor's excuse, or appointment with the Health Office is required for clearance back into our Head Start/PA Pre-K Counts classrooms.

Please refer to the list on the following page of Short-Term Illnesses and temporary health exclusions.

Health Emergencies

All Program staff are trained in CPR/First Aid and are expected to administer care as needed.

If a health emergency requires a rapid response, a staff person will administer CPR/First Aid while the other staff calls 9-1-1 and notifies the school nurse, if applicable, and the parent/guardian. If the paramedics arrive and the parent/guardian is not present, one staff member will accompany the child to the hospital (taking the emergency information completed at the time of application with them.)

Health and Nutrition Information

ILLNESS	TIMELINE
BED BUGS	If eggs or live vermin are discovered, the Head Start Teacher is to send the child home with instructions to contact the Health Office. An integrated Pest Management Team consisting of Parent, Teacher, Health Office Staff, and Operations Director will facilitate an individualized action plan with a timeline for assisting in the eradication of bed bugs within the home setting and readmission of child back to the classroom. Following parental confirmation of fumigation of the bedbugs, a Parental conference will occur with the Head Start Team to establish a process by which the child may resume program activities. The child must be cleared by the program nurse prior to returning to class or home visit.
CHICKENPOX	Until the last cluster or blisters has dried into scabs. Usually about 6 days after onset of symptoms. Need doctor's note to return. Reported to Department of Health.
COLDS	A child who is too ill to participate in activities will be sent home. If the child has copious green/yellow mucus draining from the nose, the child will be sent home and the parent will be asked to have the child seen by a health care provider. Child may return when he/she is able to fully participate in class and release is obtained from the physician.
DIARRHEA	A child who has diarrhea (define as watery stool more than 2 times in a hour), and other signs of illness such as fever and lethargy, will be sent home. Child may return 24 hours after last episode of diarrhea and if they are free of fever (see "Fever").
FEVER	Child with fever greater than 99° F under arm, or 100.4° F with a Non-touch infrared thermometer, and/or behavior changes, will be sent home. Child may return 24 hours after fever breaks (no temperature without use of medication like Tylenol/Advil etc.) or if he/she is seen by a medical professional and given an excuse to return.
FIFTH DISEASE	May return after rash appears as no longer contagious.
FLU	Child may return once free of fever (see "Fever"), chills, headache, sore throat, aching muscles, and able to fully participate in class. Coughs and drainage (runny nose) may linger for weeks.
HAND/FOOT/MOUTH DISEASE	Until rash or blisters disappear and child is free of fever (see "Fever")
HEAD LICE	Head Start follows school district "zero nit policy". If eggs or live vermin are discovered classroom staff is to send child home with instructions to contact the Health Office. Child must be cleared by program nurse prior to returning to class, socialization, or home visit activity.
IMPETIGO	May return 24 hours after treatment is begun. Need doctor's note to return.
MRSA	May return after Doctor's excuse that clears child as safe to return. *Home Visiting Option: Prior to reentry into the home by Program Staff, a physician clearance will be needed for any person living in the home with acute MRSA infection. If a dry treated lesion persists on the child, it should be covered with a bandage, if not clothing, until area is resolved.
MEASLES	May return 6 days after rash appears. Need doctor's note to return. Reportable to the Department of Health
MUMPS	May return 9 days after onset of swelling. Need doctor's note to return. Reportable to the Department of Health
PERTUSSIS	May return 5 days after antibiotic treatment was begun. Need doctor's note to return. Reportable to the Department of Health- must be a CULTURED RESULT
PINK EYE	May return 24 hours after treatment was begun or otherwise specified by physician. Need doctor's note to return.
PIN WORM	Caused by small roundworm in intestines. Signs include rectal (bottom) itching, especially at night. Pinworm eggs are spread from stool to mouth by hand or from clothing and bedding. Handwashing after diapering and toileting may decrease spread. Child may return to center once treatment is started and with physician release. Observe others for signs of illness. Notify Health Office of event. Health and Safety Manager will notify families of illness.
RING WORM	If suspect ringworm, cover area with band aid and notify parent that child may stay for the rest of the day but must see doctor and have note to return. May return 24 hours after treatment was begun. Body lesions should be covered with bandage, if not under clothing, until area is dry. Any child sent home, staff must notify Health Office of even and treatment. Email is sufficient.
SCABIES	If scabies is discovered, child is to be sent home immediately. Parents to be instructed to call Health Office. May return 24 hours after confirmed treatment was begun. Child must be cleared by Health Office to reenter the classroom.
STREP THROAT/SCARLET FEVER	May return 24 hours after treatment was begun, are "fever free" for 24 hours and can participate in classroom activities.
UNDIAGNOSED RASH	The parent will be asked to have child evaluated by a health care provider. Need doctor's note stating child may return and when.
VOMITING	A Child who vomits will be sent home especially if he/she has other symptoms of illness such as fever or lethargy. Child may return 24 hours after the last episode of vomiting and if they are free of fever (see "Fever").

Health and Nutrition Information

Medication

Medications rarely need to be given during the Head Start/PA Pre-K Counts day, most can be given before or after school hours. If a medication must be given during the school day the parent/guardian is required to set up an appointment with the Health/Safety Manager to complete a plan of care for this medication to be given in a safe manner at school. Your child's physician must approve the placement of medication into the classroom, along with parental consent. The Care Plan established for your child must be completed prior to placement of a medication for the program year. Rescue medications such as Asthma Inhalers or Epi-Pen Auto -Injection for allergic reactions may be administered by the trained teacher, classroom assistant, school nurse, Head Start nurse, or parent. Any other medication will be administered by the parent or a nurse following the State licensing requirements for medication administration.

****NEVER SHOULD ANY MEDICATION BE SENT TO SCHOOL WITH YOUR CHILD IN THEIR POCKET OR BACKPACK****

Meals

All Head Start/PA Pre-K Counts children will be offered meals & snacks at no cost to the family. During mealtimes, children sit together and children are encouraged, but never forced, to try new items. Mealtime at Head Start/PA Pre-K Counts is an important teaching tool used to discourage picky eating and to educate children on how to make healthy food choices. Children will often try a new food if their friends, parents, or teacher will try it too. Food is never used as a punishment or reward.

Breakfast is provided to infants/children and adults attending Early Head Start Socializations.

If your child has special dietary needs such as an allergy or intolerance this must be documented by a physician and accommodations will be made. Please let staff know if there are specific ethnic foods you would like to see served in the program. Concerns may be addressed with the Nutrition Supervisor.

All meals served to participants under the Child and Adult Care Food Program are served at no separate charge. The U.S. Department of Agriculture prohibits discrimination against its customers, employees, and applicants for employment on the basis of race, color, national origin, age, disability, sex, gender identity, religion, reprisal, and where applicable, political beliefs, marital status, familial or parental status, sexual orientation, or all or part of an individual's income is derived from any public assistance program, or protected genetic information in employment or in any program or activity conducted or funded by the Department. If you wish to file a Civil Rights program complaint of discrimination, call 1-866-632-9992 to request the form. Individuals who are deaf, hard of hearing, or have a speech disability may contact USDA through the Federal Relay Service at 1-800-877-8339; or 1-800-845-6136 (Spanish).

The safety of infants/children is our priority. Due to known and unknown food allergies and necessary food accommodations for children, we DO NOT permit any food (pizza, cupcakes, candy, etc.) wrapped or unwrapped to be brought in from the outside to the classroom or Socialization sites.



COMMUNITY
RESOURCE
DIRECTORY

2021-2022

Community Resource Directory

Created exclusively for Mercer County Head Start/
Early Head/PA Pre-K Counts Start families and staff.

We encourage you to use this as a quick reference guide in researching services best suited to your needs. Mercer County Head Start/Early Head Start/PA Pre-K Counts makes no guarantees regarding the policies or quality of services provided by the agencies and organizations listed.

Report changes/corrections by calling 724-346-4482 x1387.

Resource Index (Alphabetically)

211 Get Connected. Get Help	42
ACCG (Associates in Counseling & Child Guidance)	42
American Red Cross	42
AW/ARE, Inc.	42
Better Business Bureau of Western Pennsylvania	42
Blue Cross/Blue Shield Special Care	42
Bureau of PA Child Support Enforcement	43
Catholic Charities Counseling & Adoption Agency	43
Children's Aid Society of Mercer County	43
Children's Hospital of Pittsburgh	43
City Rescue Mission	43
Community Action Partnership of Mercer County	44
Community Counseling Center of Mercer County	44
Comprehensive Children & Family Services	44
Consumer Credit Counseling Services of Mercer County	44
Diversified Family Services	44
Domestic Relations	45
Early Learning Resource Center (C.C.I.S.)	45
Geraldine Apartments	45
Good Shepherd Center, Inc.	45
Greenville Public Library	46
Grove City College Education Center	46

Community Resource Directory

Resource Index (Alphabetically)

Grove City Community Library	46
Grove City Education Center for Adults	46
Grove City Medical Center	65
Helping Hands Center of Lakeview	47
Hermitage Volunteer Fire Department	47
Immaculate Heart Church- Sharing Shed	47
Jamestown Food Pantry	47
Jefferson Township Volunteer Fire Department	48
Joshua's Haven City Mission	48
Keystone Blind Association	48
Keystone Adolescent Center	48
Lakeview Area Public Library	48
Laurel Technical Institute	49
Meals on Wheels	49
Mercer Area Library	49
Mercer County Behavioral Health Commission (BHC)	49
Mercer County Assistance Office (PA Dept. of Human Services)	49
Mercer County Career Center	50
Mercer County Career Link	50
Mercer County Children and Youth Services	50
Mercer County Community Transit	50
Mercer County Family Centers	50
Mercer County Housing Authority	51
MCAR/Arc of Mercer County	51
Midwestern Intermediate Unit IV	51
National Women's Health Information Hotline	51
Neighborhood Network Education Team	51
New Beginnings	51
Northwest Legal Services	51
Office of Vocational Rehabilitation	52
Paoletta Psychological Services	52

Community Resource Directory

Resource Index (Alphabetically)

Penn Power C.A.R.E.S. Program	52
Penn State Cooperative Extension	52
Penn State – Shenango Campus	52
Pennsylvania Children’s Health Insurance Program (CHIP)	52
Pennsylvania Department of Health	53
Pennsylvania Lawyer Referral Service	53
Pennsylvania Public Utility (Water, Gas, Electric)	53
Pennsylvania State Police (Mercer Barracks)	53
People In Need	53
Phil’s Dependable Taxi	54
Poison Control Center	54
Preschool Connection	54
Primary Health Network	54
Prince of Peace	54
Protection From Abuse	54
Salvation Army	55
Sharon Community Health Center	55
Sharon Regional Behavioral Health Services	56
Sharon Regional Diagnostic & Imaging Center	56
Sharon Regional Medical Center	65
Shenango Valley Community Library	56
Shenango Valley Shuttle Bus	56
Shenango Valley Urban League	57
Social Security Administration	57
Special Kids Network	57
Springfield Township Volunteer Fire Department	57
St. John’s Episcopal Church	57
STD Clinic of Mercer County	57
Stey Nevant Library	57
The VBC Food Pantry	58
The Women’s Center - Sharon Regional Medical Center	58
	58

Community Resource Directory

Resource Index (Alphabetically)

Thiel College	58
United Way of Mercer County	58
UPMC Horizon Hospitals	65
UPMC Womancare Center	59
Victim / Witness Program	59
Vocational & Psychological Services	59
West Central Center for the Deaf	59
WIC (see Shenango Valley Urban League)	59
YMCA Sheanango Valley	59



Community Resource Directory

Resource Index (by Type)

CHILD CARE

Early Learning Resource Center (C.C.I.S.)	45
Grove City College Early Education Center	46
Mercer County Career Center	49

CHILD ISSUES

Bureau of PA Child Support Enforcement	43
Children's Aid Society of Mercer County	43
Mercer County Children and Youth Services	50
Mercer County Family Centers	50

CLOTHING

Good Shepherd Center, Inc.	45
Helping Hands Center (Lakeview)	47
New Beginnings	51
Prince of Peace	54
Salvation Army – Thrift Stores	55

CONSUMER AFFAIRS

Better Business Bureau of Western Pennsylvania	42
Community Action Partnership of Mercer County	44
YMCA (Shenango Valley)	59

COUNSELING SERVICES

ACCG (Associates in Counseling & Child Guidance)	42
Catholic Charities Counseling & Adoption Agency	43
Community Counseling Center of Mercer County	44
Comprehensive Children & Family Services	44

Community Resource Directory

Resource Index (by Type)

COUNSELING SERVICES CONTINUED.....

Mercer County Behavioral Health Commission (BHC)	49
Paoletta Psychological Services	52
Sharon Regional Behavioral Health Services	56
Vocational & Psychological Services	59

DISABILITIES

Keystone Blind Association	48
MCAR/Arc of Mercer County	51
Mercer County Behavioral Health Commission (BHC)	49
Midwestern Intermediate Unit IV	51
Office of Vocational Rehabilitation	52
Preschool Connection	54
Special Kids Network	57
West Central Center for the Deaf	59

DOMESTIC VIOLENCE

AW/ARE, Inc.	42
Protection From Abuse	54

EDUCATION/TRAINING

Grove City College Education Center	46
Grove City Education Center for Adults	46
Keystone Adolescent Center	48
Laurel Technical Institute	48
MCAR/Arc of Mercer County	57
Mercer County Career Center	49
Neighborhood Network Education Team	51
Penn State Cooperative Extension	52
Penn State – Shenango Campus	52
Thiel College	58

Community Resource Directory

Resource Index (by Type)

EMERGENCY FOOD/ASSISTANCE

American Red Cross	42
City Rescue Mission	43
Good Shepherd Center, Inc.	45
Helping Hands Center (Lakeview)	47
Mercer County Assistance Office (PA Dept. of Human Services)	49
Salvation Army	55
Shenango Valley Urban League	57
The VBC Food Pantry	58

EMPLOYMENT

Mercer County Career Link	50
---------------------------	----

ENERGY ASSISTANCE

Community Action Partnership of Mercer County	44
Mercer County Assistance Office (PA Dept. of Human Services)	49
Penn Power C.A.R.E.S. Program	52
Prince of Peace	54
Salvation Army	55

EXPECTANT MOTHERS, INFANT & TODDLER SUPPORT

Catholic Charities - Project WIN (Women In Need)	43
New Beginnings	51
People In Need	53
Shenango Valley Urban League	57

FINANCIAL/LEGAL

Community Action Partnership of Mercer County	44
Consumer Credit Counseling Services of Mercer County	44
Domestic Relations	45

Community Resource Directory

RESOURCE INDEX (BY TYPE)

FINANCIAL/LEGAL CONTINUED...

Mercer County Assistance Office (PA Dept. of Human Services)	49
Northwest Legal Services	51
Pennsylvania Lawyer Referral Service	53
Protection From Abuse	54
Social Security Administration	57
Victim / Witness Program	59

FIRE/RESCUE DEPARTMENTS

Clark Volunteer Fire Department	43
Farrell Fire Department	45
Fredonia Volunteer Fire Department	45
Greenville Fire Department	45
Grove City Volunteer Fire Department	47
Hempfield Township Volunteer Fire Department	47
Hermitage Volunteer Fire Department	47
Jamestown Volunteer Fire Department	47
Jefferson Township Volunteer Fire Department	47
Mercer East End Volunteer Fire Department	50
North Sharon Volunteer Fire Company	51
Patagonia Volunteer Fire Department	52
Pennsylvania Emergency Management Agency	53
Pennsylvania State Police (Mercer Barracks)	53
Pine Township Engine Company	53
Sandy Lake Volunteer Fire Department	55
Sharon Fire Department	55
Sharpsville Volunteer Fire Department	56
South Pymatuning Township Vol. Fire Dept., Station #78	57
Springfield Township Volunteer Fire Department	57
Stoneboro Volunteer Fire Company	58
Transfer Volunteer Fire Department	58
West Middlesex Volunteer Fire Department	59
West Salem Volunteer Fire Department	59
Wheatland Volunteer Fire Department	59

Community Resource Directory

Resource Index (by Type)

FOOD

City Rescue Mission	43
Good Shepherd Center, Inc.	45
Helping Hands Center (Lakeview)	47
Immaculate Heart Church (Sharing Shed)	47
Jamestown Food Pantry	47
Meals on Wheels	49
Prince of Peace Center	54
Salvation Army	55
St. John's Episcopal Church	57
The VBC Food Pantry	58

HEALTH CARE

Children's Hospital of Pittsburgh	65
Grove City Medical Center	65
Keystone Blind Association	48
National Women's Health Information Hotline	51
Pennsylvania Department of Health	53
Poison Control Center	54
Primary Health Network	54
Sharon Community Health Center	55
Sharon Regional Behavioral Health Services	56
Sharon Regional Diagnostic & Imaging Center	56
Sharon Regional Medical	65
Shenango Valley Urban League	57
STD Clinic of Mercer County	57
The Women's Center (Sharon Regional Medical Center)	58
UPMC Horizon Hospital	65
UPMC Womancare Center	59

Community Resource Directory

Resource Index (by Type)

HEALTH INSURANCE

Blue Cross/Blue Shield Special Care	42
PA Children's Health Insurance Program (CHIP)	52

HOUSING

Community Action Partnership of Mercer County	44
Geraldine Apartments	45
Joshua's Haven City Mission	48
Mercer County Housing Authority	50
Prince of Peace	54

INFORMATION/REFERRAL

United Way of Mercer County	58
-----------------------------	----

LIBRARIES

Greenville Public Library	46
Grove City Community Library	46
Lakeview Area Public Library	48
Mercer Area Library	49
Shenango Valley Community Library	56
Stey Nevant Library	58

LITERACY PROGRAMS/ABE/GED

Grove City Education Center for Adults	46
Helping Hands Center (Lakeview)	47
MCAR/Arc of Mercer County	51
Mercer County Career Center	49

Community Resource Directory

Resource Index (by Type)

PARENTING CLASSES AND SUPPORTS

Catholic Charities Counseling & Adoption Agency	43
Children's Aid Society of Mercer County	43
Diversified Family Services	44
New Beginnings	51
Prince of Peace	54

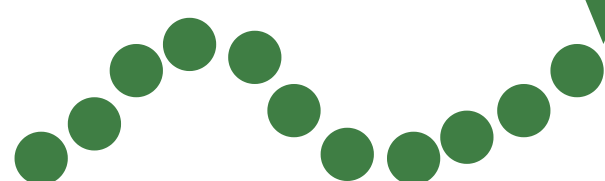
TRANSPORTATION

Mercer County Community Transit	50
Phil's Dependable Taxi	54
Shenango Valley Shuttle Bus	56

WEATHERIZATION

Community Action Partnership of Mercer County	44
---	----

WHY AM I MY CHILD'S FIRST TEACHER?
HEAD START FIRMLY BELIEVES THAT PARENTS ARE
THE FIRST TEACHERS OF THEIR CHILDREN.
WE WANT YOU TO BE PART OF THEIR LEARNING
THAT IS WHY WE ASK YOU TO
VOLUNTEER REGULARLY IN THE CLASSROOM.
IT IS ALSO WHY WE COME TO YOUR HOME TO TALK
ABOUT YOUR CHILD.
IT IS WHY WE WANT YOU TO ASK QUESTIONS AND
GIVE US YOUR IDEAS.
WE HOPE YOU TAKE PART IN OUR PROGRAMS FOR
PARENTS.



Community Resource Directory

Resource Directory

2*1*1 Get Connected. Get Help

211 Call, text or chat 24/7

Website: www.211.org

We are the boots on the ground, the local experts who make finding help easier. Our teams of compassionate, highly trained specialists are available 24/7 to help you access the best local resources and services to address ANY need. 211 is committed to being the first, most essential resource to anyone who needs help. We help thousands of people overcome barriers and address challenges every day.

ACCG (Associates In Counseling & Child Guidance)

724-724-983-1131

272 East Connelly Blvd., Sharon, PA 16146

Website: www.accg.net

Psychological testing, individual and family counseling, psychiatric/medical interventions, and wraparound services.

AMERICAN RED CROSS

724-962-9180 1-800-RED-CROSS (800-733-2767)

517 W. Main Street, Sharpsville, PA 16150

Website: www.redcross.org

Disaster services.

AW/ARE, INC. - Mercer County's Center Against Domestic & Sexual Violence

24-hr toll free hotline: 1-888-981-1457, Local/TTY hotline: 724-981-1457

Business: 724-342-4934 (M-F 8:30-4:30)

Legal Advocacy: 724-662-3800, ext. 2542

109 S. Sharpsville Avenue, Sharon, PA 16146

E-mail: info@merceraware.org

Website: www.merceraware.org

24-hr. hotline, 24-hr. accessible shelter for female victims of domestic violence and their children, individual & group supportive counseling, advocacy with county systems, medical & legal advocacy and accompaniment, and community and school prevention education. All services are free and confidential.

BETTER BUSINESS BUREAU OF WESTERN PENNSYLVANIA

412-456-2700 M-F 8:30 am – 3:30 pm

400 Holiday Drive Suite 200, Pittsburgh, PA 15220

Fax: 412-922-8656

Email: info@pittsburgh.bbb.org

Website: www.pittsburgh.bbb.org

BLUE CROSS/BLUE SHIELD SPECIAL CARE (Adults)

800-544-6679 or 800-GO-BASIC

Health insurance is available at reduced rates for eligible adults.

Community Resource Directory

Resource Directory

BUREAU OF PA CHILD SUPPORT ENFORCEMENT

800-932-0211

CATHOLIC CHARITIES COUNSELING & ADOPTION AGENCY

724-346-4142 M-F 8:30-5:00 (closed 12:00-1:00 pm)

995 Linden Street., Sharon, PA 16146

E-mail: skain@cccas.org

Website: www.cccas.org

Emergency pregnancy services, foster home care, adoption, free pregnancy testing, marriage & family counseling.

Counseling in the areas of baby blues, parenting information, anxiety, and relationship problems for biological mother and/or father. (sliding scale) Must have an appointment.

Project W.I.N. (Emergency baby supplies for low-income mothers - diapers, wipes, clothes, blankets, etc. free for PA residents).

CHILDREN'S AID SOCIETY OF MERCER COUNTY

724-662-4730 M-F 8:00-4:00 by APPOINTMENT- some services 24/7

350 W. Market St., P.O. Box 167, Mercer, PA

E-mail: casmc@zoominternet.net

Website: www.casmerc.org

Adoption, Foster Care, Family Life education programs (parenting, divorce, babysitting), Nurturing Program, Family-based Mental Health Services, Residential Program, Emergency Shelter, Day Care (6 wks. to 12 yrs.), intensive in-home intervention services, information, and referral. (no cost for some services, depends on service).

Safe Kids Program: Are you in need of a car seat, safety gate, or crib? Safe Kids at Children's Aid Society can help! For additional information, please contact Kayla Emery at kemery@casmerc.org.

CHILDREN'S HOSPITAL OF PITTSBURGH

412-692-5325

4401 Penn Avenue, Pittsburgh, PA 15224

Website: www.chp.edu

Casework and counseling, medical and dental care, occupational, physical, speech therapy, psychiatric services, psychological testing, and evaluations for children 0-18.

CITY RESCUE MISSION

724-652-4321 Call for Appointment; bring ID and proof of income

319 S. Croton Ave., New Castle, PA 16103

www.cityrescuemission.org

Meals, lodging, clothing, furniture, emergency food, home visitation, Inter-city youth activities, and emergency housing for fire victims.

Food Bank hours: Monday-Friday, 9:00-11:00 AM and 12:30-3:30 PM.

CLARK VOLUNTEER FIRE DEPARTMENT

724-962-1330

2798 Winner Road, Clark, PA 16113

Community Resource Directory

Resource Directory

COMMUNITY ACTION PARTNERSHIP OF MERCER COUNTY

724-342-6222 or 1-888-508-5216 TTY 724-342-2714

75 S. Dock St., Sharon, PA 16146

Website: www.capmercer.org

Utilities Assistance –

Weatherization, customer assistance program, Neighbor for Neighbor fund, heating & water heater repair or replacement program, and \$1 energy fund.

Employment –

Work-ready program to help with the transition to employment and training programs to secure and retain employment.

Housing –

Housing counseling, rural housing loan program, housing repair loan program, single-family rental housing, and senior housing. (Senior Housing; Heather Koerber 724-347-1959)

Veteran's Programs

COMMUNITY COUNSELING CENTER OF MERCER COUNTY

724-981-7141 (or) 1-866-853-7758 Hours vary, some evening hours, limited sat.

2201 E. State St., Hermitage, PA 16148

77 N. Main Street, Greenville, PA 16125

107 Breckenridge Street, Suite 1, Grove City, PA 16127

Website: www.cccmer.org

Individual, group, and family counseling, mental health treatment, consultation, and assessment. Wrap-around services and peer support, vocational services for persons with mental health. Most insurance accepted or sliding scale fee.

COMPREHENSIVE CHILDREN & FAMILY SERVICES

724-981-9900 (or) 1-800-630-2237 M-F 8:00-4:30

194 E. State Street, Sharon, PA 16146

E-mail: Administration@comprehensivecfs.com

Website: www.comprehensivewraparound.com

BHRS wraparound services (BHT, BSC, MT). Services for ADHD, Oppositional Defiant Disorder, Specialized Autism Support services, Intensive Behavioral Health Services, School-Based Services, and Summer Therapeutic Activities Program. Accept private insurance: Medical Assistance (MA).

CONSUMER CREDIT COUNSELING SERVICES OF MERCER COUNTY

724-983-5334

734 Stambaugh Avenue, Sharon, PA 16146

Free budget counseling, debt management, and education

DIVERSIFIED FAMILY SERVICES

724-346-2123 M-F 9:00-5:00

5454 E. State Street, P.O. Box 102., Hermitage, PA 16148

Website: www.diversifiedfamily.org

Active parenting classes that address the issues involved with parenting.

Community Resource Directory

Resource Directory

DOMESTIC RELATIONS

724-662-2404, 724-662-3800

M-F 8:30-4:30

Mercer County Courthouse, 121 N. Pitt St., Mercer, PA 16137

Website: www.mercercountypacourts.org/domrelations.html; (www.childsupport.state.pa.us)

Provides for payment of cash support and/or medical expenses by the independent spouse to the dependent spouse and/or minor children. Based on the number of persons to be supported and the income and expenses of each party per statewide guidelines. Possible 4-8 week waits between filing and hearing; \$5.00 filing fee for new action

Early Learning Resource Center Region 1 (formerly C.C.I.S)

(North Institute of Research)

800-860-2281 or 878-202-4169

Colonial Square 701 North Hermitage Road, Bldg. 2, Suite 26 Hermitage, PA 16148

E-mail: elrcregion1@pa.gov

Website: <http://nwirelrc.org>

Subsidized funding for daycare services & information on various locations in Mercer County where daycare is available

FARRELL FIRE DEPARTMENT

724-983-2707

500 Roemer Blvd., Farrell, PA 16121

FREDONIA VOLUNTEER FIRE DEPARTMENT

724-475-2646

46 First St., Fredonia, PA 16124

GERALDINE APARTMENTS

724-475-4457

521 Delaware Road, #12, Fredonia, PA 16124

Low-income housing (30% of income)

GOOD SHEPHERD CENTER, INC.

724-588-2210

M-F 9:00-5:00 Office

10 N. Water St., Greenville, PA 16125

e-mail: tgscinc@yahoo.com

Website: www.thegoodshepherdcenter.org

Food Pantry – Greenville & surrounding-not being served by another food pantry. Hours; M/W 8:30-3 & T,H, F 8:30-12: (photo ID required) MUST come to the office first.

In-House Meals (Soup Kitchen) – FREE; Monday nights 4:30-5:30; Every TU & TH 12:00-1:00.

Thrift Stores-(low-cost) Limited clothing, gift certificates for free clothing. Hours; M-F 10:00-4:00.

GREENVILLE FIRE DEPARTMENT

724-588-3111

111 East Ave., Greenville, PA 16125

Community Resource Directory

Resource Directory

GREENVILLE PUBLIC LIBRARY

724-588-5490 T-W-TH 9:30-8:00 & F-SAT 9:30-4:30, Summer SAT 9:30-1:00

330 Main St., Greenville, PA 16125

e-mail: director@greenvillelibrary.net or childrens@greenvillelibrary.net

Website: www.greenvillelibrary.net

Books, books on CD, DVD's, Large Pr. collection, WiFi, public computers, copier, fax, children & teen programs. Summer reading program.

Free to residents for Greenville Borough, Hempfield & Sugar Grove Twps., or member of other Mercer County library; \$15 annual membership for non-residents.

GROVE CITY COLLEGE EARLY EDUCATION CENTER

724-458-2000 M-F 8:00am – 4:00pm

H Class Sessions 8:30-11:00am or 12:30-3:00pm (\$630.00 per/yr)

MWF Class Sessions 8:30-11:00 am or 12:30-3:00pm (\$900.00 per/yr)

Website: www2.gcc.edu/dept/educ/ecc

100 Campus Dr., Grove City PA 16127

A Christian environment that provides developmental child-centered, hands-on learning activities in a caring, risk-free atmosphere. A framework of positive guidance with values as a foundation.

GROVE CITY COMMUNITY LIBRARY

724-458-7320 M- 10-6, T-F 10-5 & SAT 9-12

Fax # 724-458-7332 Summer Hours; SAT 9-12

125 W. Main St., Grove City, PA 16127

e-mail: gccl@grovecitypalibrary.org

Website: www.grovecitypalibrary.org

FREE Services for all ages! Books, newspapers, magazines, books on CD, DVD's, music, internet computers, WiFi access, databases, e-books, e-readers, children & teen programs, adult programs, and 2-hr laptop rental.

GROVE CITY EDUCATION CENTER FOR ADULTS

724-458-7270 M & W 6-9:00pm, TU & THUR 9am-12pm

118 South Center St., Grove City, PA 16127

Email: gcedcenter@gmail.com

Website: www.gcedcenter.org

GED preparation (classes and one-to-one tutoring), LPN entrance exam preparation, ESL (English as a second language), basic workplace skills including; math, reading, and writing. Services are free.

GROVE CITY MEDICAL CENTER- Alleghany Health Network

724-450-7000 24/7

724-450-7188- CPR Services

631 N. Broad Street, Grove City, PA 16127

e-mail: dhenley@gcmcpa.org

Website: www.grovecitymedical.org

Full complement of diagnostic and medical services, full range of rehabilitative therapies, and a transitional care center. Emergency and surgical services.

Community Resource Directory

Resource Directory

GROVE CITY VOLUNTEER FIRE DEPARTMENT

724-458-5311

395 East Pine St., Grove City, PA 16127

HELPING HANDS CENTER (Lakeview Area)

724-376-3231 M-T-TH-F 9:00-3:30

51 Lake St., PO Box 145, Stoneboro, PA 16153

Food Pantry (free bread & sweets), Thrift Store – Clothing & Furniture items are for sale.

Help: Whatever the need we try to help.

Satellite for Salvation Army Services: Jackson Center, Hadley, Stoneboro, Clarks Mills, and Fredonia areas.

HEMPFIELD TOWNSHIP VOLUNTEER FIRE DEPARTMENT

724-588-6001

20 Sixth Avenue, Greenville, PA 16125

HERMITAGE VOLUNTEER FIRE DEPARTMENT

724-342-0669

2511 Highland Rd., Hermitage, PA 16148

IMMACULATE HEART OF MARY CHURCH (Sharing Shed)

724-662-2999 2nd & 4th Sat. 10:00-12:00

100 Penn Ave., Mercer, PA 16137

ihm@zoominternet.net

JAMESTOWN FOOD PANTRY

724-927-6069

701 Denver St., Jamestown, PA 16134 (St. Margaret's Church)

Website: www.ctrforfamilyservices.org

Serving residents living in zip code areas: 16110, 16111, 16131, and 16134; Open 1st & 3rd Friday of every month from 9:00–11:00 AM; Must show proof of residency and provide social security numbers for each household member.

JAMESTOWN VOLUNTEER FIRE DEPARTMENT

724-932-5009

208 Depot Street, Jamestown, PA 16134

JEFFERSON TOWNSHIP VOLUNTEER FIRE DEPARTMENT

724-662-2881

1648 Bend Road, Mercer, PA 16137

Community Resource Directory

Resource Directory

JOSHUA'S HAVEN CITY MISSION

724-983-0304 1:00-5:00pm Administrative
 5:00pm – 8:00am Emergency Shelter 7 days/wk, 365 days/yr
 1230 Stambaugh Avenue, PO Box 128, Sharon, PA 16146
 E-mail: joshuashaven@verizon.net
 Website: www.joshuashaven.org
 Emergency shelter for men on-site. 18 yr. or older. Free bread program Sat/Sun 1-3 pm for everyone.
 Medical Clinic: Tuesdays 1-5 pm.

KEYSTONE BLIND ASSOCIATION

724-347-5501 M-TH 7:00-4:30
 3056 E. State Street, Hermitage, PA 16148
 E-mail: kba@keystoneblind.org
 Website: www.keystoneblind.org
 Offers blind and visually handicapped Mercer County residents services designed to maintain and improve their quality of life and to actively work for the prevention of blindness. To educate, empower, and employ people who are blind and/or disabled.

KEYSTONE ADOLESCENT CENTER

724-588-5020 M-F 7:30-3:00
 425 S. Good Hope Road, Greenville, PA 16125
 Website: www.keystoneadolescentcenter.com

LAKEVIEW AREA PUBLIC LIBRARY

724-376-4217 TUE & FRI 10:00-6:00
 3265 Main Street, Sandy Lake, PA 16145
 Email: books@lakeviewarealibrary.org
 Website: www.lakeviewarealibrary.org
 Books, dvd's, vhs, and audiobooks to loan. FREE summer reading program; Computers, WiFi, copy and fax service. Local information.
 Fees: \$15 membership fee; Closed Sundays, Mondays, Wednesdays, and Thursdays.

LAUREL TECHNICAL INSTITUTE

724-439-4900
 2370 Broadway Avenue, Hermitage, PA 16148

 724-983-0700 Sharon
 Sharon Site: 200 Sterling Avenue, Sharon, PA 16146

 814-724-0700 Meadville
 Meadville Site: 847 Main Street Suite 204, Meadville, PA 16335
 Email: lti.adminission@laurel.edu
 Website: www.laurel.edu

Community Resource Directory

Resource Directory

MEALS ON WHEELS (SHENANGO VALLEY)

724-342-2042 M-F 8:30-12:30 pm

396 Buhl Blvd., Sharon, PA 16146

E-mail: mealsonwheels396@verizon.net

Provides nutritious meals to anyone who is unable to shop and/or cook for themselves because of emotional or physical problems.

Must reside within a 10-mile radius of the Sharon area. **Fee for service** (hot meal & soup \$6/day, hot meal, soup & bag lunch \$8/day, cold bag lunch only \$3/day).

A non-profit organization with only 3 part-time employees, all others are volunteer only.

MERCER AREA LIBRARY

724-662-4233 Tues. & Thurs. 10-6:30 pm; Wed. & Fri. 10-5 pm; Sat. 10-12:30 pm

Fax # 724-662-8893

110 E. Venango Street, Mercer, PA 16137

Website: mercerarealibrary.org

Job hunting, books, materials, copying, printing, and faxing. Free

MERCER COUNTY BEHAVIORIAL HEALTH COMMISSION (BHC)

724-662-1550 M-F 8:30-4:30

8406 Sharon-Mercer Rd, Mercer, PA 16137

MENTAL HEALTH SERVICES: Central Intake – 724-662-2230

24/7 crisis phone # 724-662-2227

E-mail: available through website

Website: www.mercercountybhc.org

Provides early intervention for children birth to three years of age with developmental delays. Case management, crisis management, prevention, and BHRS monitoring. Services are free or sliding scale.

MERCER COUNTY ASSISTANCE OFFICE (PA DEPT HUMAN SERVICES)

724-983-5000 M-F 7:30-5:00 (closed holiday's)

2236 Highland Rd., Hermitage, PA 16148

E-mail: c-mercer@state.pa.us

Financial assistance (S.S.I., SNAP/Food Stamps, Medical Assistance, Long Term Care & Waiver Service Benefits, etc.) for Mercer County residents, Emergency Energy Assistance.

MERCER COUNTY CAREER CENTER

724-662-3000

776 Greenville Rd., P.O. Box 152, Mercer, PA 16137

Website: www.mercerccc.org

Pre-school (training pre-school for Early Childhood Education students). September-May, Monday-Thursday. Cost is \$40-half day/month; \$80- full day/month.

Community Resource Directory

Resource Directory

MERCER COUNTY CAREER LINK

724-347-9257 1-866-347-9257 M-T-TH-F 8:00-4:30 & W 10:00-4:30

217 W. State St., Sharon, PA 16146

Website: www.jobgateway.pa.gov

Employment or educational training opportunities for low-income or dislocated individuals.

Other services include veteran services, vocational rehabilitation, employment assistance, and job training.

MERCER COUNTY CHILDREN AND YOUTH SERVICES (CYS)

724-662-2703 M-F 8:30-4:30

(Emergency Number – 724-662-6130)

8425 Sharon-Mercer Rd., Mercer, PA 16137

Website: www.mcc.co.mercer.pa.us

Foster care services and independent living skills to youth ages fourteen and older. Protective and supportive services for abused, or neglected children and their families, as well as address behavioral needs of youth.

MERCER COUNTY COMMUNITY TRANSIT

724-981-6222 or 800-222-8797 M-F 6am-5pm

2495 Highland Rd., Hermitage, PA 16148

Website: www.mccog.com

Transportation to health care appointments for public assistance and medical cardholders, senior citizen; fee for others

MERCER COUNTY FAMILY CENTERS

Hours of Operation vary by site

Farrell/Wheatland – 724-346-3915

panthony@farrellareaschools.com

Greenville – 724-588-2844

svalimont@greenville.k12.pa.us

Jamestown – 724-932-5613

Reynolds – 724-646-4781

Sharon – 724-983-4015 ext. 5102

lori-marley@sharon.k12.pa.us

Home visits using PAT curriculum birth to age 5, assessments/screenings, advocate for families, parent education, information and referral, Toy Lending Library, and group meetings.

MERCER COUNTY HOUSING AUTHORITY

724-342-4000 M-F 8:30-4

80 Jefferson Avenue, Sharon, PA 16146

Website: www.mchachoice.com

MERCER EAST END VOLUNTEER FIRE DEPARTMENT

724-662-3290

104 Wilson Avenue, Mercer, PA 16137

Community Resource Directory

Resource Directory

MCAR / Arc of MERCER COUNTY

724-981-2950 M-F 8:30 – 4:00

850 North Hermitage Road, Hermitage, PA 16148

Email: mcara@mercerarc.org

Website: www.mercerarc.org

Day programs; pre-vocational, adult training, older adult daycare.

Residential; family living, group home, respite

Community; supported employment, companion, habilitative aid, camps

Support; general advocacy, educational advocacy, self-advocacy & autism support groups

Cost varies depending on the program.

MIDWESTERN INTERMEDIATE UNIT IV

724-458-6700 or 800-942-8035 M-F 8:00 – 4:00

Main Office: 453 Maple St., Grove City, PA 16127

Satellite Office: Mt. Chestnut Early Learning Center, 139 Rieger Road, Butler, PA 16001

Website: www.miu4.org

Comprehensive early intervention programs and services from screening to preschool classroom programs for children ages 3-5 who demonstrate a 25% delay of their chronological age in one or more developmental areas.

NATIONAL WOMEN'S HEALTH INFORMATION HOTLINE

800-994-9662

Website: www.womenshealth.gov

NEW BEGINNINGS (ALPHA OMEGA CENTER)

724-406-0673 number is textable M-W 11:00-5:00

Offices located in Slippery Rock, New Castle, Sandy Lake, and Butler

E-mail: clientservices@alphaomegacenter.org

Website: www.alphaomegacenter.org

There are no income or geographical requirements to enroll, any expectant parents or parents of children three and under are welcome. Provide parenting education and material assistance. STI Testing. Men welcome.

NORTH SHARON VOLUNTEER FIRE COMPANY

724-347-5151

469 Thornton Ave., Sharon, PA 16146

NORTHWEST LEGAL SERVICES

724-346-6112 or 800-665-6957(new clients)

www.nwls.org

1013 Roemer Blvd., Farrell, PA 16121

Legal representative in various civil matters (public benefits, family law, housing, healthcare, education, and employment) to qualifying individuals.

Community Resource Directory

Resource Directory

OFFICE OF VOCATIONAL REHABILITATION

724-983-5721

217 W. State St., Sharon, PA 16146

Provides vocational rehabilitation services to eligible citizens in order to maintain or gain employment.

Possible services include initial evaluation of eligibility, vocational guidance counseling, possible job training, physical/mental restoration, and job placement services.

PA DEPARTMENT OF HUMAN SERVICES

<https://www.dhs.pa.gov>

Office of Administration, Office of Child Development and Early Learning, Office of Children Youth and Families, Office of Developmental Programs, Office of Income Maintenance, Office of Long Term Living, Office of Medical Assistance Programs, Office of Mental Health and Substance Abuse Services

PAOLETTA COUNSELING SERVICES

724-662-7202 M & FRI 9:00-5:00, T-W-TH 9:00-8:00

456 N. Pitt Street, Mercer, PA 16137

E-mail: dawnh@svol.net

Website: www.paoletta.org

Outpatient counseling, psychiatric/psychological evaluations, medication management, BHRS, PCIT and EMDR. MA, Medicare, VBH and most private insurances accepted.

PATAGONIA VOLUNTEER FIRE DEPARTMENT

724-342-0776

119 Superior St., Hermitage, PA 16148

PENN POWER C.A.R.E.S. PROGRAM

800-720-3600

PENN STATE-SHENANGO CAMPUS

724-983-2800

147 Shenango Ave., Sharon, PA 16146

PENN STATE COOPERATIVE EXTENSION

724-662-3141 (or) 724-342-4036 M-F 8:30-4:30

P.O. Box 530, 463 N. Perry Highway, Mercer, PA 16137

Email: mercerext@psu.edu

Website: extension.psu.edu/mercer

Nutrition education, parent/ECE professional education, 4-H (ages 5-18), adult education: agricultural, forestry, gardening, etc. Free or low-cost.

PENNSYLVANIA CHILDREN'S HEALTH INSURANCE PROGRAM (C.H.I.P.)

800-986-KIDS (5437)

Website: www.dhs.pa.gov/CHIP/Pages/CHIP.aspx

Provides free or low-cost health insurance to uninsured children whose families earn too much to qualify for medical assistance, but not enough to purchase health insurance.

Community Resource Directory

Resource Directory

PENNSYLVANIA DEPARTMENT OF HEALTH

724-662-6068

800-986-BABY (800-986-2229) Healthy Baby Hotline

25 McQuiston Dr., Jackson Center, PA 16133

Provides Well Baby Clinics and AIDS Testing

PENNSYLVANIA EMERGENCY MANAGEMENT AGENCY

724-357-2990 or 800-972-7362 Western Region Office

1310 Elmerton Ave., Harrisburg, PA 17110

Website: www.pema.pa.gov

Prevention, preparedness, mitigation, response and recovery from all types of disasters

PENNSYLVANIA LAWYER REFERRAL SERVICE

800-692-7375

PENNSYLVANIA PUBLIC UTILITY (Water, Gas, Electric)

800-692-7380

www.puc.state.pa.us

400 North Street Keystone Building, Harrisburg, PA 17120

PENNSYLVANIA STATE POLICE (Mercer Barracks)

724-662-6162

829 Franklin Road, Mercer, PA 16137

Free car seat inspections on the third Wednesday of each month between 12:00 - 4:00 pm. Recommend calling for an appointment.

PEOPLE IN NEED

724-657-3303 M-F 8:30-4:30

2703 W. State St, New Castle, PA 16101

Website: www.PINPA.ORG

Provides counseling, food assistance, utility assistance, support services, and baby supplies up to age one.

PHIL'S DEPENDABLE TAXI

724-981-7445 M-SAT 6:00am – 1:00am

405 Walnut Street, Sharon, PA 16146

Transportation services, NOT wheelchair accessible. \$2.50 to start + \$2.00 per mile.

PINE TOWNSHIP ENGINE COMPANY

724-458-0636

545 Barkeyville Road, Grove City, PA 16127

Community Resource Directory

Resource Directory

POISON CONTROL CENTER

800-222-1222

www.chp.edu/CHP/poisoncenter

Pittsburgh Poison Center University of Pittsburgh Medical Center

200 Lothrop Street BIR 010701, Pittsburgh, PA 15213

To receive Mr. Yuk Stickers, send a self-addressed stamped envelope.

PRIMARY HEALTH NETWORK

Buhl Farm Health Center – 724-342-2789 220 North Buhl Farm Drive, Hermitage, PA

Center for Health & Well-Being – 724-981-1721 350 Sharon-New Castle Rd, Farrell, PA

Elm Avenue – 724-704-7182 89 Elm Avenue, Sharon, PA 16146

Farrell Dental Center – 724-981-1721 350 Sharon-New Castle Rd, Farrell, PA

Farrell Health Center – 724-981-2246 602 Roemer Boulevard, Farrell, PA 16121

Green Street Primary Care B – 724-342-6900 2000 Green Street, Farrell, PA 16121

Sharon Medical Group – 724-342-6604 63 Pitt Street, Sharon, PA 16146

Offices also located in Greenville, Mercer, Jamestown, Sandy Lake, Sheakleyville, and Transfer.

Website: www.primary-health.net

Services include Family Practice, Pediatrics, Dentistry, Podiatry, Internal Medicine, Ear, Nose, Throat and Allergy Care, OB/GYN, Pain Management, Optometry & Hypnotherapy.

Accepts all Medicare and Medicaid plans, processes most insurances, and offers sliding fee billing to anyone who qualifies, regardless of insurance status.

PRINCE OF PEACE

724-346-5777 M - F 9:00-4:00

502 Darr Ave., PO Box 89, Farrell, PA 16121

e-mail: popc@princeofpeacecenter.org

Website: www.princeofpeacecenter.org

Food Program, Soup Kitchen, clothing, PA workwear job attire, and interview training, utility payment assistance, and homeless and low-income assistance. Other services include: case management for the homeless or transitionally homeless and HOPE Advocacy (intensive case management to build more stable families and homes), POPC Boutique, Family Supportive Crisis Intervention.

Food Pantry hours: 3rd Thursday of each month, 9:30 AM-12:30 PM & 4:00-6:00 PM

PROTECTION FROM ABUSE

Prothonotary Office: 724-662-3800

Mercer County Court House: 724-962-5711

Immediate protection from physical abuse or assault from spouse and/or minor children

Community Resource Directory

Resource Directory

SALVATION ARMY

Sharon – 724-347-5537 M-F 9:00-13:00, Family Thrift T-F 9:00-4:00, Sat 9:00-1:00
 660 Fisher Hill, PO Box 629, Sharon, PA 16146
 e-mail: Stephanie.Childs@use.Salvationarmy.org
 Website: www.salvationarmy.org

Must provide proof of income & Sharon residency (utility bills), Social Security number of all family members, birth certificate for all children under age 12

Food Pantry – monthly; emergency food, soup kitchen, holiday assistance, temporary shelter, senior center, children's center, and thrift clothing store.

Bread distribution every Tuesday, sign-up at 10:00 am, distribution at 11:00 am.

Greenville – 724-588-5190 M-T-TH-F 9:00-4:00 (closed 12-1) W 9:00-12:00
 228 Main Street, Greenville, PA 16125
 e-mail: Kara.martin@USE.salvationarmy.org
 Website: www.salvationarmy-wpa.org

Must provide proof of income & Reynolds/Greenville residency (utility bills), Social Security number of all family members, birth certificate for all children under age 12.

Food Pantry –monthly and emergency food assistance.

Grove City – 724-458-9840
 717 W. Main Street, Grove City, PA 16127
 Crisis Counseling, winter clothing, emergency housing & food, fuel assistance

SANDY LAKE VOLUNTEER FIRE DEPARTMENT

724-376-2714
 3295 N. Main Street, Sandy Lake, PA 16145

SHARON COMMUNITY HEALTH CENTER

724-347-5519
 94 Connelly Boulevard, Sharon, PA 16146
 Provides routine primary care and preventative health services to individuals who receive medical assistance or who are uninsured or underinsured.

SHARON FIRE DEPARTMENT

724-983-3213
 155 W. Connelly Blvd., Sharon, PA 16146

Community Resource Directory

Resource Directory

SHARON REGIONAL BEHAVIORAL HEALTH SERVICES

724-983-5454 or 1-800-950-9982

2375 Garden Way, Sharon, PA 16146

Website: www.sharonregional.com/bhs/

A full spectrum of mental health and substance abuse services to residents of Mercer County and surrounding areas.

Services include Adult, child, adolescent, and geriatric psychiatric inpatient services, wrap-around services, outpatient mental health, and substance abuse counseling.

SHARON REGIONAL DIAGNOSTIC & IMAGING CENTER

724-983-3931

2435 Garden Way, Hermitage, PA 16148

Website: www.sharonregional.com

Provides advanced diagnostic testing and imaging services to patients in Mercer, Lawrence and surrounding counties. The Diagnostic and Imaging Center houses dedicated areas for women's health services and health education.

SHARPSVILLE VOLUNTEER FIRE DEPARTMENT

724-962-7846

214 W. Main St., Sharpsville, PA 16150

SHENANGO VALLEY COMMUNITY LIBRARY

724-981-4360 M-TH 10:00-8:00, FRI & SAT 10:00-5:00

Fax # 724-981-5208

11 N. Sharpsville Ave., Sharon, PA 16146

e-mail: clskenangovalley@gmail.com

Website: www.clsv.net

Materials to lend (books, DVD's, music, e-books), reference materials, free children's and family literacy programs, free programs for all ages (story hours, art classes, craft days, computer lessons). Free internet access, research assistance, job & career center workstations. FREE membership to residents of Sharon & Hermitage; fee of \$35 for non-residents, copies .25 per page; faxes available.

SHENANGO VALLEY SHUTTLE BUS

724-981-1561

2495 Highland Road, Hermitage, PA 16148

Website: www.svss.mccog.com

A fixed-route bus service that serves the City of Sharon, Mercer County Courthouse, Grove City Outlets, Borough of Sharpsville, City of Farrell, City of Hermitage, Borough of Wheatland with three routes, the northern, southern, and central, that travel between downtown Sharon and the Shenango Valley Mall. Low Cost.

Community Resource Directory

Resource Directory

SHENANGO VALLEY URBAN LEAGUE

724-981-6154 (or) 814-676-0099 M-T-TH-F 8:00-4:00, W-11:00-7:00

724-981-5310 - WIC

724-981-5310 - Housing Assistance

601 Indiana Ave., Farrell, PA 16121

Website: www.svuleague.org

Housing Dept.: supports clients with rent assistance, mortgage foreclosure, and counseling service.

Employment, Human Relations, and Financial Literacy services.

Education Dept.: youth programming, summer apprenticeship program, mentoring, scholarships, and leadership program.

WIC Program.

SOCIAL SECURITY ADMINISTRATION

877-467-1702 (or) 800-772-1213 M-F 8:45-3:45

2380 Garden Way, Hermitage, PA 16148

Website: www.socialsecurity.gov

SOUTH PYMATUNING TOWNSHIP VOLUNTEER FIRE DEPARTMENT, STATION #78

724-962-9481

3505 Tamarack Dr., Sharpsville, PA 16150

SPECIAL KIDS NETWORK

800-986-4550

Counselors help families locate services for children, regardless of age, such as disability/special education information, assertive technology, recreational resources, etc.

SPRINGFIELD TOWNSHIP VOLUNTEER FIRE DEPARTMENT

724-748-3597

404 Old Ash Road, Mercer, PA 16137

ST. JOHN'S EPISCOPAL CHURCH

724-981-8131

226 W. State St., Sharon, PA 16146

Food Pantry hours: 3rd Thursday, 10:30-12:30 PM

STD CLINIC OF MERCER COUNTY (at Family Planning Adagio Health)

724-981-6250 M-F Appointment Needed

87 Stambaugh Avenue, Suite 1, Sharon, PA 16146

Community Resource Directory

Resource Directory

STEY NEVANT LIBRARY

724-983-2714 M - TH 11:00-7:00

1000 Roemer Blvd., Farrell, PA 16121

Website: www.steynevantlibrary.com

Free programs for all ages (story hours, art classes, craft days, computer lessons). Free internet access, research assistance, job & career center workstations. Books, magazines, newspapers, DVDs, audiobooks for checkout. Special collections include Urban books, board books, mysteries, black studies, Westerns, and Horror. Children's & Family Programming: story hours, movies, summer reading clubs for kids, teens, and adults, and crafts. FREE membership to residents of Sharon & Hermitage; fee of \$35 for non-residents, copies .25 per page; faxes available.

STONEBORO VOLUNTEER FIRE COMPANY

724-376-2396

38 Linden Street, Stoneboro, PA 16153

THE VBC FOOD PANTRY

724-347-1045 2ND & 4TH TUES of Month 2-5:30 pm

500 Sharon-New Castle Road, Farrell, PA 16121

Non-profit food pantry assisting people in need twice a month. Located in the lower level of Valley Baptist Church. Emergency services available, photo id required.

THE WOMEN'S CENTER (Sharon Regional Health System)

724-983-3927

740 E. State St., Sharon, PA 16146

Website: www.sharonregional.com/womens.htm

THIEL COLLEGE

724-589-2000 1-800-24-thiel

75 College Ave., Greenville, PA 16125

Website: www.thiel.edu

Bachelor's Degree in ECE (Early Childhood Education) PreK – 4 and SPED (Special Ed) PreK – 8. Various associate, undergraduate, and graduate degrees are available. Please visit the website for more information on education programs.

TRANSFER VOLUNTEER FIRE DEPARTMENT

724-646-2659

58 Delmar Dr., Greenville, PA 16125

UNITED WAY OF MERCER COUNTY

724-981-1884

493 S. Hermitage Road, Hermitage, PA 16148

724-458-4527

119 S. Broad Street, Grove City, PA 16127

Website: www.uwmercercounty.org

211: Social Service Helpline (or 1-888-665-6923)

Community Resource Directory

Resource Directory

UPMC WOMANCARE CENTER

724-347-7700 or 1-866-347-7700

875 N. Hermitage Rd., Hermitage, PA 16148

VICTIM / WITNESS PROGRAM

724-662-3800 EXT. 2287 M-F 8:30-4:30

209 County Courthouse, Mercer, PA 16137

Website: www.mcc.co.mercer.pa.us

Ensure that crime victims in Mercer County are provided their rights and services under PA's standards.

VOCATIONAL AND PSYCHOLOGICAL SERVICES

724-982-4790 M - F 9:00am – 5:00 pm

76 Jefferson Avenue, Sharon, PA 16146

Email: vpsmerc1@verizon.net

Website: vpsdocs.com

Psychological testing, counseling, and TSS services. Ages 2 to adult. Autism services, job coaching, tutoring, and educational services. Most insurance accepted.

WEST CENTRAL CENTER FOR THE DEAF

724-342-3323, TTY-724-981-4327 8:30-4:30 (with on-call component)

2201 E. State Street, Hermitage, PA 16148

Website: www.westpadeaf.org

Provides behavior and emotional health care services to children and adolescents (birth–22 year olds), who are deaf or hard-of-hearing or children with parents who are deaf or hard-of-hearing. Services are free or covered by insurance.

WEST MIDDLESEX VOLUNTEER FIRE DEPARTMENT

724-528-2615

25 North St., West Middlesex, PA 16159

WEST SALEM VOLUNTEER FIRE DEPARTMENT

724-588-3945

625 Vernon Rd., Greenville, PA 16125

WHEATLAND VOLUNTEER FIRE DEPARTMENT

724-347-5367

71 Broadway Avenue, Wheatland, PA 16161

YMCA (SHENANGO VALLEY)

724-981-6950 M-F 5:15am – 8:30pm, Sat 7:00am-1:00pm, Sun 9:00am-1:00pm

925 N. Hermitage Road, Hermitage, PA 16148

Website: www.svymca.com

Variety of programs and services aimed at youth development, healthy living, and social responsibility.

Service for all ages, youth sports including basketball, soccer, t-ball, swim team, and more. Cost varies, financial assistance available.

Community Resource Directory

Dentists & Dental Clinics/Centers

*indicates patient sedation for follow-up care

***ALLIED DENTAL GROUP**

724-794-2224
234 S. Main Street
Slippery Rock, PA 16057

DR. BARRETTA, JOSEPH LEONARD

814-333-1186
105 Mead Ave #B
Meadville, PA 16335

***DRS. BOURNIAS, CERVONE & DERLINK DENTAL ASSOCIATES**

814-336-4304
764 Bessemer St, Suite 100
Meadville, PA 16335

DR. CHARLTON, DENNIS

724-376-7161
3242 South Main St
Sandy Lake, PA 16145

***CHILDREN'S HOSPITAL DENTAL**

412-692-5440
45th & Penn Avenues
Pittsburgh, PA 15201

***DENTISTRY FOR CHILDREN & TEENS**

DR. DAVIS

724-774-1920
265 Third St
Beaver, PA 15009

***DRS. DIETZ AND PALM**

724-652-7491
2210 Wilmington Rd
New Castle, PA 16101

DR. ELISCO, MARK

724-981-1223
3110 Highland Rd
Hermitage, PA 16148

FARRELL DENTAL CLINIC,

724-981-1721
350 Sharon-New Castle Rd
Farrell, PA 16121

DR. FOULK, PAUL LAKELAND DENTAL

814-382-5100
Conneaut Lake, PA 16316

DR. GLECOS, ROBERT FRENCH CREEK DENTAL

814-333-6000
900 Water St.
Meadville, PA 16335

DR. HAYES, LINDSAY

724-458-4500
1007 W. Main St
Grove City, PA 16127

***DR. HOFFMAN, JESSIE GROWING GRINS DENTISTRY**

724-472-4211
105 W. Culvert St.
Zelienople, PA 16063

***DR. KENNEY, LAWRENCE**

724-652-7491
2210 Wilmington Rd
New Castle, PA 16121

DR. KOLLAR, JAMES

724-981-4270
2200 East State St
Hermitage, PA 16148

DR. KOSICK, THOMAS

724-376-2004
36 Branch Street
Stoneboro, PA 16153

Community Resource Directory

Dentists & Dental Clinics/Centers

*indicates patient sedation for follow-up care

DR. KRANTZ, ANDREW

724-458-4500
1007 West Main St
Grove City, PA 16127

DR. LAH, THOMAS

724-458-9422
1235 S. Center St Ext
Grove City, PA 16127

**DRS. MANGANELLO, JOHN &
MANGANELLO, PATRICK DMD**

724-588-3012
126 College Ave
Greenville, PA 16125

DR. PAIGE, JAMES

724-652-5509
802 W. Washington St
New Castle, PA 16105

***DR. MILLER, CHARLES**

724-662-3833
200 S. Main St
Mercer, PA 16137

***DR. MISCO-SHELESTAK, STEPHANIE**

724-981-4141
3577 E. State St.
Hermitage, PA 16148

**DRS. MONG, ERIC &
MONG, JAMIE**

724-588-8910
206 Main St
Greenville, PA 16125

***NEW CASTLE DENTAL CENTER**

724-656-3486
1112 S. Mill St
New Castle, PA 16105

***DR. ROSEN, JAMES**

724-981-8871
701 N. Hermitage Rd
Hermitage, PA 16148

DR. ROWLES, JOHN

814-587-2438
906 Washington St
Conneautville, PA 16406

DR. SHELESTAK, RICHARD

724-528-1515
3115 Main Street
West Middlesex, PA 16159

DR. THEOFILOS, ANNETTE

724-346-5173
2213 Shenango Valley Fwy
Hermitage, PA 16148

DR. VOISEY, LON

724-981-4850
912 E. State St
Sharon, PA 16146

DR. WOODS, KENNETH

724-946-3534
212 W. Vine St
New Wilmington, PA 16142

Community Resource Directory

OBSTETRICIAN'S

UPMC Women Care Center

DR. ABDUL-MALAK, MICHAEL
724-347-4561
2151 Shenango Valley Fwy A-2
Hermitage, PA 16148

DR. HANIGOSKY, REBECCA

724-981-4960
480 N. Kerwood Dr, Suite 103
Hermitage, PA 16148

Magee-Womens Specialty Services at UPMC Horizon

724-981-8080
350 Sharon-New Castle Road
Farrell, PA 16121

Magee-Womens Specialty Services at UPMC Horizon

724-588-4240
90 Shenango Street
Greenville, PA 16125

Magee-Womens Specialty Services at UPMC Horizon

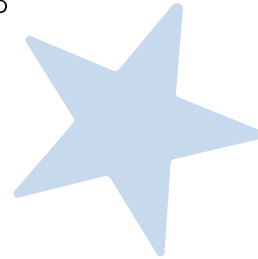
724-652-2255 or 724-698-1040
26 Nesbitt Road, Suite 100
New Castle, PA 16101

Magee-Womens Specialty Services at UPMC Horizon

724-458-7737
647 N. Broad Street Ext., Suite 106
Grove City, PA 16127

Sharon Medical Group

724-981-4434
63 Pitt Street
Sharon, PA 16146



Community Resource Directory

PHYSICIAN'S & PEDIATRICIANS

DR. BUDEK, ALLEN

724-657-5310
1750 New Butler Road
Suite A
New Castle, PA 16101

BUHL FARM COMMUNITY HEALTH CENTER

DR. STOUDT, DONALD
724-324-2789
220 N Buhl Farm Road
Hermitage, PA 16148

FAMILY HEALTHCARE PARTNERS

DR. HOYT, DAVID G.
DR. THOMAS, KEVIN
724-662-4990
400 W. Butler St.,
Mercer, PA 16137

FAMILY HEALTHCARE PARTNERS

DR. SMITH, EDWARD G.
DR. SPRANDO, CHRIS
724-458-4950
420 Hillcrest Avenue
Grove City, PA 16127

FAMILY HEALTHCARE PARTNERS

DR. PARONISH, MICHAEL
DR. JENKINS, JENNIFER
724-376-3175
25 Linden Street
Stoneboro, PA 16153

FAMILY HEALTHCARE PARTNERS

724-735-4241
321 E. Mercer Street
Harrisville, PA

FRANKLIN COMMUNITY MEDICINE- UPMC

DR. BENDT, PETER
814-437-6793
464 Allegheny Avenue, Suite 2D
Franklin, PA 16323

FRANKLIN PEDIATRIC ASSOCIATES

DR. COOKE, CURTIS
814-437-1541
110 N. 13th Street
Franklin, PA 16323

GREEN STREET PRIMARY CARE

724-346-6900
2000 Green Street
Greenville, PA 16125

GREENVILLE COMMUNITY HEALTH CENTER PRIMARY HEALTH

DR. JOHNSON, LYNNE
DR. HOGUE, ANGELA
724-588-5250
348 Main Street
Greenville, PA 16125

GREENVILLE MEDICAL CENTER

DR. MCCRILLIS, LYNNE
724-588-4240
90 Shenango St.
Greenville, PA 16125

HELPING HANDS PEDIATRICS

DR. CHLPKA, PAUL
724-346-6494
585 East State St.
Sharon, PA 16146

26 Nesbitt Rd #400
New Castle, PA 16105

HERMITAGE COMMUNITY MEDICINE

DR. THOMPSON, MICHELLE
724-347-4099
705 Brookshire Dr.
Hermitage, PA 16148

Community Resource Directory

PHYSICIAN'S & PEDIATRICIANS

DR. HOYT, DAVID

724-458-5872
675 N. Broad Street
Grove City, PA 16127

KIDS WAY PEDIATRIC-LINDEN POINTE

DR. DUFFY, CHERYL
724-981-1219
3068 INNOVATION WAY
HERMITAGE, PA 16148

MEADVILLE PEDIATRICS

DR. DOWNING, TIMOTHY
DR. LEUNG, RAYMOND
DR. CONRAD, LISA
814-336-6384
765 Liberty Street, Suite 111
Meadville, PA 16335

MERCER FAMILY MEDICAL CENTER

DR. MORGAN, SCOTT
724-662-4155
405 Greenville Rd.
Mercer, PA 16137

MERCER PRIMARY CARE

DR. FULLERTON, TIMOTHY
DR. SHIPTON, BENJAMIN
724-662-2650
737 GREENVILLE ROAD
MERCER, PA 16137

NEW CASTLE PRIMARY CARE

DR. COLE, ANDREW
724-658-4564
1112 S MILL STREET
NEW CASTLE, PA 16101

NEW WILMINGTON FAMILY MEDICINE

DR. UBERTI, ANTHONY
724-946-8979
3438 STATE ROUTE 208
NEW WILMINGTON, PA 16142

PINE MEDICAL CENTER

DR. DAVID HEFNER
724-458-5872
1424 W. Main Street
Suite 3
Grove City, PA 16127

SANDY LAKE COMMUNITY HEALTH

DR. BROOKS, CORINNE
724-376-7111
3205 S. Main Street
Sandy Lake, PA 16145

SHARON MEDICAL GROUP

DR. MESSINA, MICHAEL
724-981-1940
DR. CUNNINGHAM, JOHN
724-342-4052
63 Pitt Street
Sharon, PA 16146

SHEAKLEYVILLE HEALTH CENTER

724-253-3428
3339 Perry Hwy
Sheakleyville, PA 16151

STEWART PRIMARY CARE

Dr. BEE, DANIEL
724-981-0825
2425 Garden Way Suite 102
Hermitage, PA 16148

STIGLIANO FAMILY PRACTICE

DR. STIGLIANO, RICHARD
724-342-5335
3140 Highland Rd.
Hermitage, PA 16148

TRANSFER HEALTH CENTER

DR. NYSTROM, JOEL
724-962-3553
1291 Rutledge Road
Transfer, PA 16154

Community Resource Directory

PHYSICIAN'S & PEDIATRICIANS

UPMC HORIZON FAMILY MEDICINE

DR. CIAMBOTTI, JENNIFER
724-962-3528
875 N. HERMITAGE RD.
HERMITAGE, PA 16148

HOSPITALS

UNIVERSITY OF PITTSBURGH MEDICAL CENTER (UPMC) - HORIZON HOSPITAL

888-447-1122
724-983-7962 Lactation Consultant – Lynn McGahan
Website: www.upmchorizon.com

Greenville Campus - 724-588-2100
110 N. Main St., Greenville, PA 16125

Shenango Valley Campus - 724-981-3500
2200 Memorial Drive, Farrell, PA 16121

SHARON REGIONAL MEDICAL (STEWART MEDICAL GROUP)

724-983-3911
740 E. State St., Sharon, PA 16146
Website: www.sharonregionalmedical.org

GROVE CITY MEDICAL CENTER- AHN-GROVE CITY

724-450-7000 24/7
724-450-7188- CPR Services
631 N. Broad Street, Grove City, PA 16127
Website: www.grovecitymedical.org

CHILDREN'S HOSPITAL OF PITTSBURGH

412-692-5325
4401 Penn Avenue, Pittsburgh, PA 15224
Website: www.chp.edu

Casework and counseling, medical and dental care, occupational, physical, speech therapy, psychiatric services, psychological testing, and evaluations for children 0-18.



info@mchs-ehs.org



www.mchs-ehs.org



[@mercercountyheadstart](https://www.instagram.com/mercercountyheadstart)



[@MercerCountyPaMCHS](https://www.facebook.com/MercerCountyPaMCHS)

Head Start/Early Head Start/ PA Pre-K Counts

Main Office

1901 Memorial Drive
Farrell, PA 16121
724-346-4482
Toll Free # 1-866-284-1059
Fax # 724-346-4431

